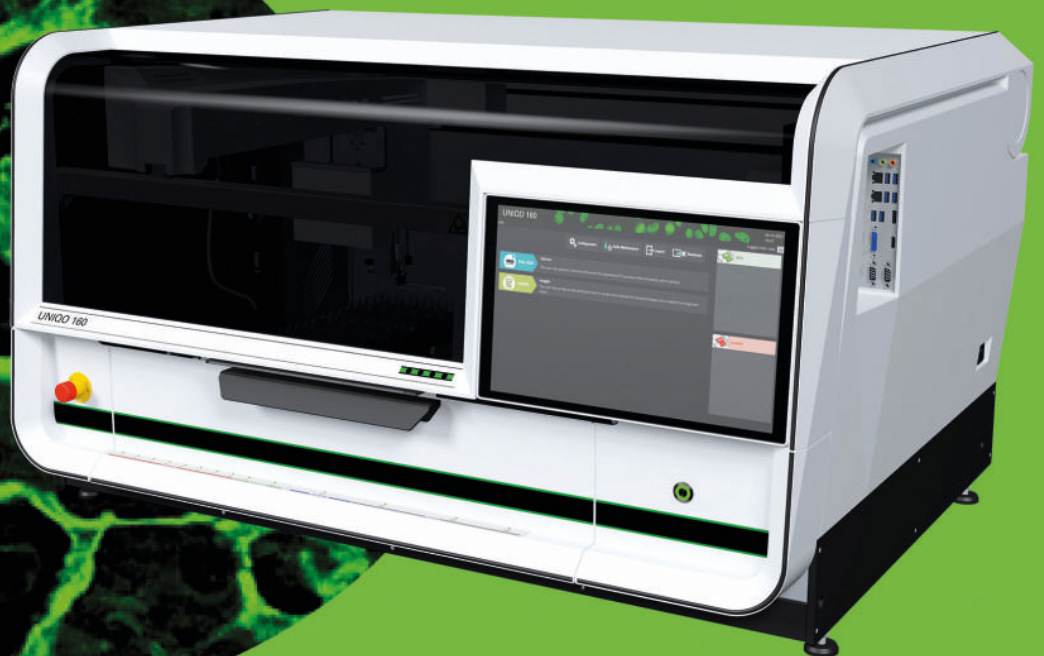
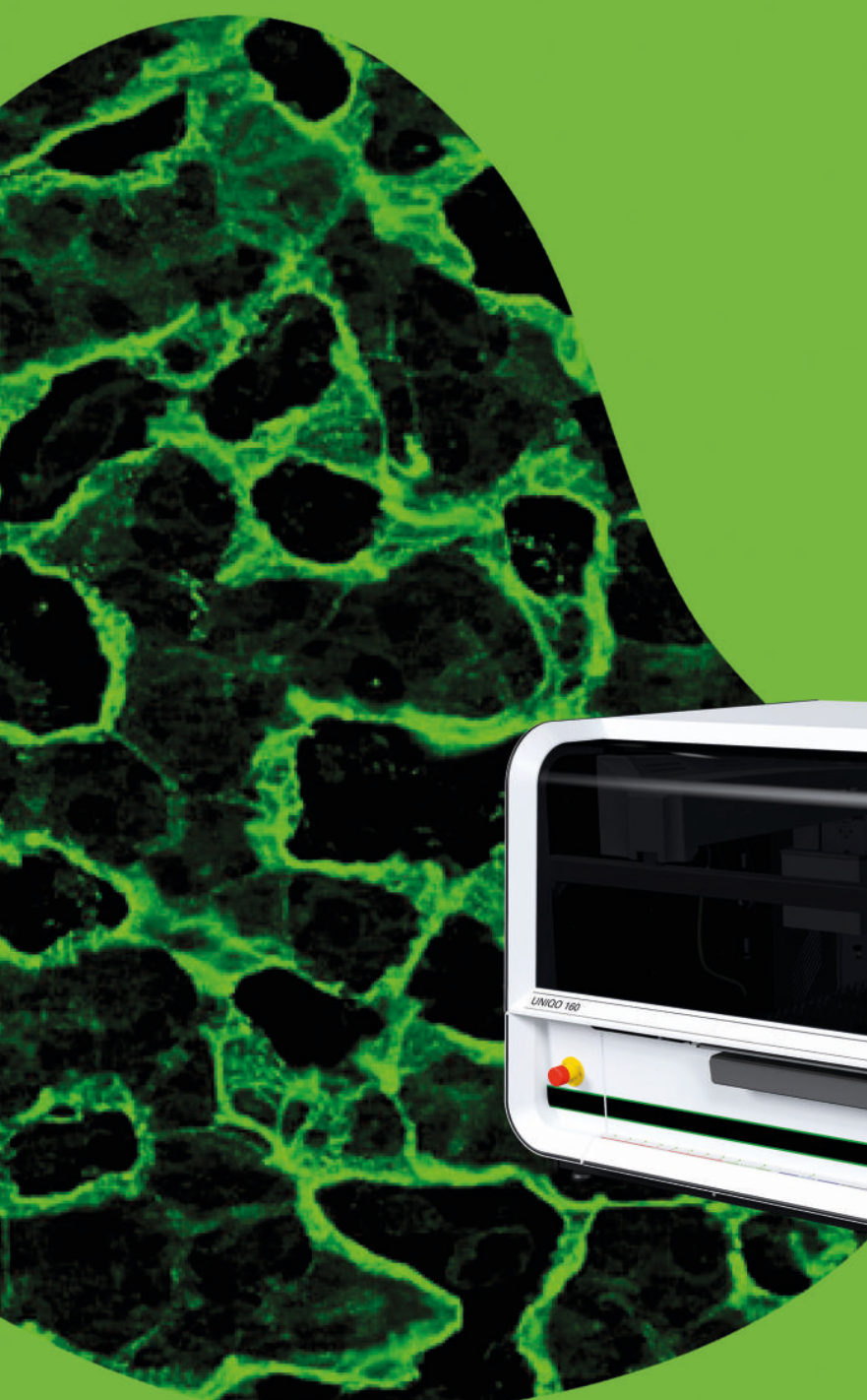


euroimmun 

From Revvity

UNIQO 160 – Easy. Efficient. Exceptionel.



All-in-one IFA automation



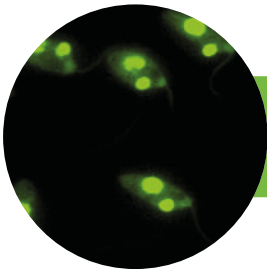
- Fully automated system for processing and evaluation of indirect immunofluorescence assays (IFA) for up to 160 samples per run
- Brilliant fluorescence images due to the integrated high-quality microscope unit with automatic triple objective revolver
- Quick loading as well as correct assignment and traceability of samples, reagents and slides via barcode identification
- Excellent service from Euroimmun - your partner for everything from test systems to instruments and software

Reliable IFA results in just two steps



1. Sample loading

Fully automated test processing with the UNIQO 160



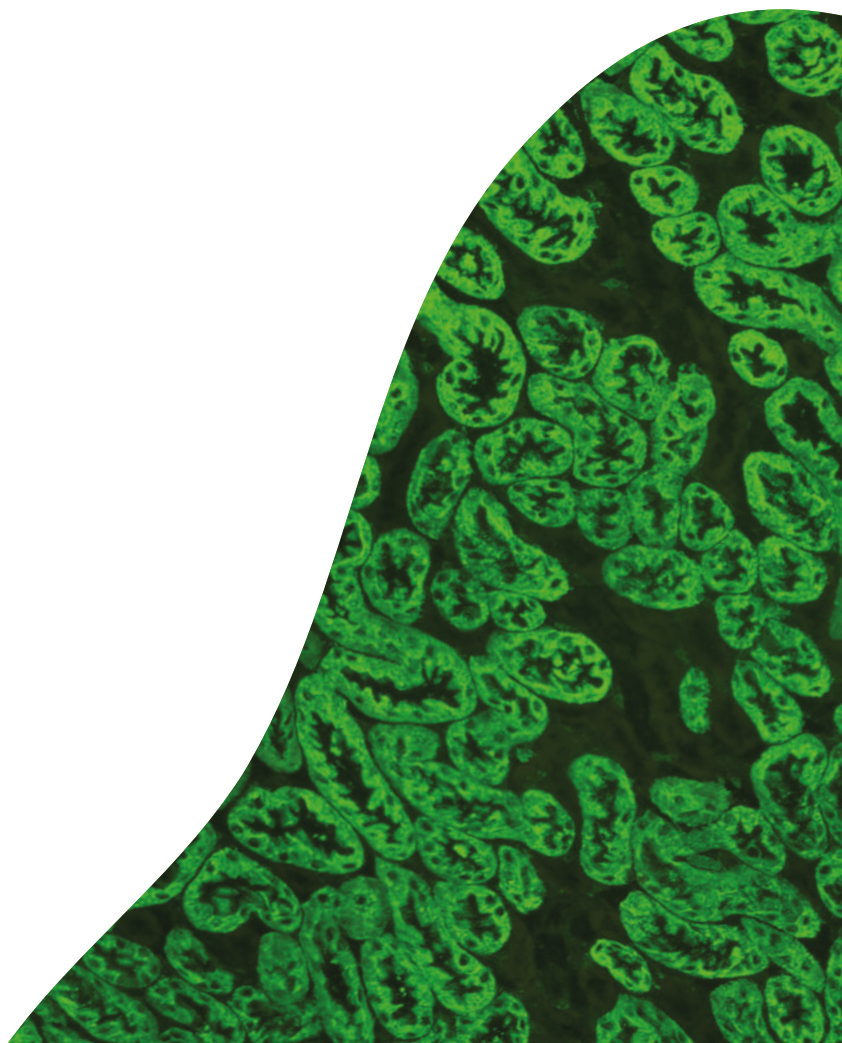
2. Computer-assisted IFA evaluation

Full automation from primary sample to result proposal

The UNIQO 160 is a top-quality all-in-one automated solution for IFA diagnostics, providing maximum efficiency with minimum hands-on time.

After the patient samples and reagents have been loaded, the UNIQO 160 fully automatically processes the tests, from sample preparation to image acquisition, thus combining the functions of several automated IFA systems in one compact benchtop device.

Sample organisation, data archiving and computer-assisted evaluation are performed in a structured and convenient manner using the Euroimmun middleware EUROLabOffice 4.0. Manual intermediate steps are not required before final evaluation as the data exchange with EUROLabOffice 4.0 also takes place automatically.



UNIQUO 160

One instrument – seven functions



Barcode recognition

Simple loading as well as secure assignment and traceability of samples, reagents and slides throughout the whole process with the integrated barcode scanner



Sample preparation

Optimal preparation of the test processing due to flexible loading with up to

- 20 controls
- 4 dilution buffers
- 9 bottles of conjugate and mounting medium



Incubation

Simultaneous incubation of different test systems with a capacity for up to

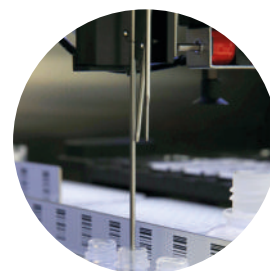
- 160 IFA samples
- 288 dilutions
- 18 slides





Washing

Efficient and carryover-free washing using three washable stainless-steel needles



Mounting

Fully automated slide mounting prevents sample material drying, creating the ideal conditions for the acquisition of excellent fluorescence images - even with long worklists



Microscopy

Fast image acquisition with the high-quality microscope unit with three automatically changing objectives (4x, 10x, 20x)

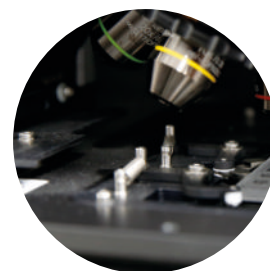
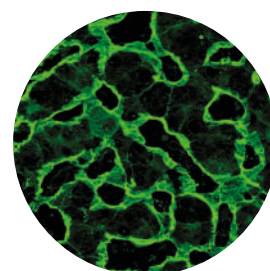


Image acquisition

Brilliant fluorescence images due to the high-resolution camera with autofocus

Automatic data transmission to EUROLabOffice 4.0 for final evaluation



All data at a glance with EUROLabOffice 4.0

EUROLabOffice 4.0 is the advanced control centre for your laboratory and is connected bidirectionally to the UNIQO 160. This allows you and your laboratory personnel to create worklists quickly and flexibly, even for changing analysis requests, and to store all information securely.

After the UNIQO 160 has completed IFA processing, all data relevant for evaluation are displayed together in one window in the user interface. In addition, previous test results are visible at a glance in the patient history and stored data and archived images can be accessed directly with just one click.



▪ Result proposal

The screenshot shows the main interface of EUROLabOffice 4.0. On the left, there are panels for 'Dilutions' (1:100, 1:1000), 'Substrates' (IFPa-2, Liver), 'Actions', and 'Slide preview'. The center displays a large image of a cell slide with green fluorescence. On the right, there is an 'Analysis' panel with 'ANA' selected, showing a 'Qualitative result' of 'Positive' and a 'Classifier' with 'Homogeneous' selected at 1:1000. Below the image is a 'Patient history' table with columns for date, patient name, and test results.

| 19.07.2015 | 17.01.2018 | 27.02.2014 | 07.07.2011 | 07.12.2008 |
|--------------|--------------------------|------------|--------------------------|------------|
| P ANCA 1:100 | P ANA Homogeneous 1:1000 | N ANCA | P ANA Homogeneous 1:1000 | N ANA |
| N ANCA | P Citrullinase 1:100 | N ANCA | | |

- Dilutions
- Substrates
- Process information
- Lot information

▪ Patient history with direct access to individual results and images

- Pattern and titer proposals
- Positive/negative classification

The close-up shows the 'Classifier' panel with the following options:

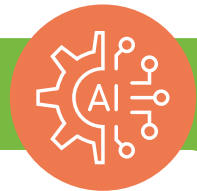
- Homogeneous 1:1000
- Speckled ?
- Nuclear dots ?
- Centromere ?
- Nucleolar ?
- Cytoplasmic ?
- Nuclear membrane ?

EUROPattern Classifier – AI-enhanced software

The EUROPattern Classifier is a software compatible with EUROLabOffice 4.0 that automatically generates a result proposal (including titer calculation) for a constantly growing number of substrates. Its deep convolutional neural networks, a process of artificial intelligence, were intensively trained during the development of the software. This enables the algorithm to classify fluorescence patterns reliably and quickly. All data obtained for the substrates and dilutions are consolidated into one result proposal for each patient.



Software-based evaluation support for a wide range of substrates



ANA diagnostics

- HEp-2/HEp-20-10 cells
- *Crithidia luciliae*

Diagnostics of coeliac disease

- Liver (monkey) IgA
- Oesophagus (monkey) IgA

Diagnostics of autoimmune liver diseases

- Liver (rat)
- Kidney (rat)
- Stomach (rat)
- VSM47 cells (rat)

ANCA diagnostics

- Granulocytes
- HEp-2 cells + granulocytes (EOH)

Diagnostics based on antigen-expressing cells

- Neurology: e.g. AMPA 1/2, NMDAR, GABAR B1/B2, LGI1, CASPR2, DPPX
- Nephrology: PLA2R and THSD7A

Find out more at www.euroimmun.com
or contact us directly:
www.euroimmun.com/contact

