



UNIQO 160

All-in-one IIFT automation

EASY. EFFICIENT. EXCEPTIONAL.



UNIQO 160
EASY. EFFICIENT. EXCEPTIONAL.

NEW!



- Fully automated system for processing and evaluation of indirect immunofluorescence tests (IIFT) for up to 160 samples per run
- Brilliant fluorescence images due to the integrated high-quality microscope unit with automatic triple revolver
- Quick loading as well as correct assignment and traceability of samples, reagents and slides via barcode identification
- Excellent service from EUROIMMUN – your partner for everything from test systems to instruments and software

Full automation from primary sample to final result

The **UNIQO 160** is a top-quality all-in-one automated solution for IIFT diagnostics, providing maximum efficiency with minimum hands-on time.

After the patient samples and reagents have been loaded, the UNIQO 160 fully automatically processes the tests, from sample preparation to image acquisition, thus combining the functions of several automated IIFT systems in one compact benchtop device.

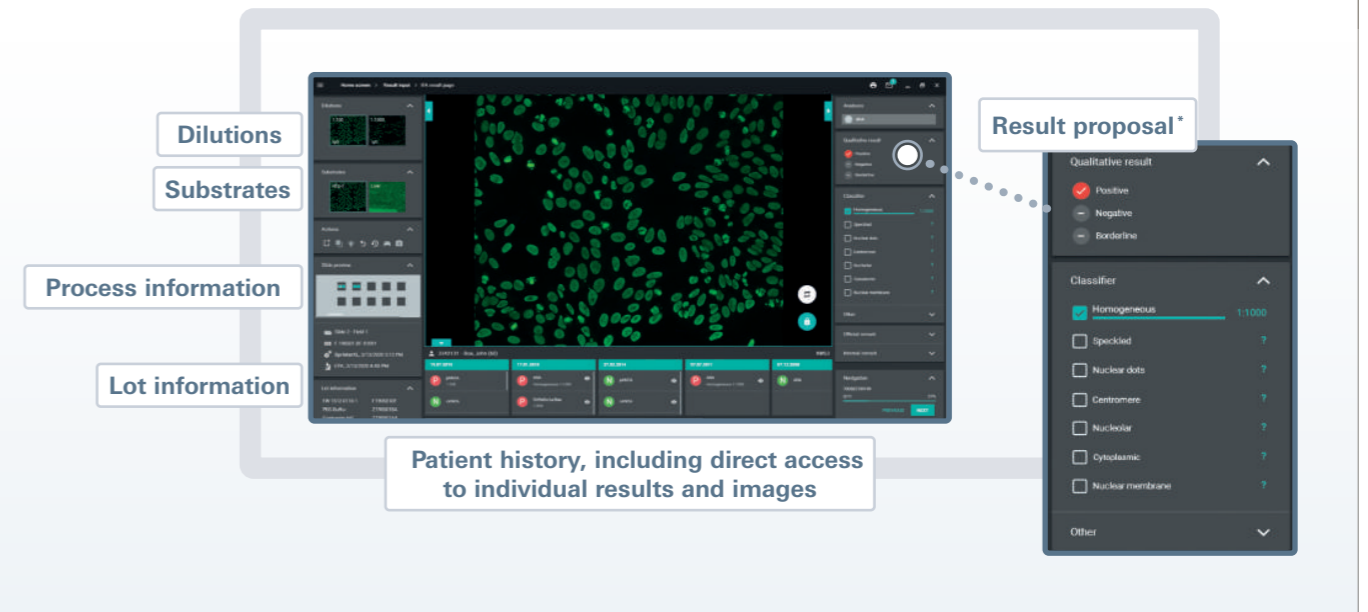
Sample organisation, data analysis and final evaluation are performed in a structured and convenient manner using the EUROIMMUN middleware **EUROLabOffice 4.0**. Manual intermediate steps are not required before final evaluation as the data exchange with EUROLabOffice 4.0 also takes place automatically.



All data at a glance with EUROLabOffice 4.0

EUROLabOffice 4.0 is the advanced control centre for your laboratory and is connected bidirectionally to the UNIQO 160. This allows you and your laboratory personnel to create worklists quickly and flexibly, even for changing analysis requests, and to store all information securely.

After the UNIQO 160 has completed IIFT processing, all data relevant for evaluation are displayed together in one window in the user interface. In addition, previous test results are visible at a glance in the patient history and stored data and archived images can be accessed directly with just one click.



* soon available for the UNIQO 160



One instrument – seven functions

1 Barcode recognition

Simple loading as well as **secure assignment and traceability** of samples, reagents and slides throughout the whole process with the integrated barcode scanner



2 Sample preparation

Optimal preparation of the test processing due to **flexible loading** with up to

- 20 controls
- 4 dilution buffers
- 9 bottles of conjugate and mounting medium



3 Incubation

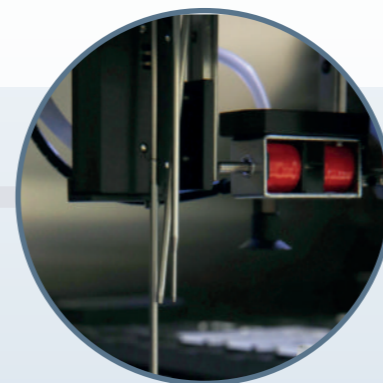
Simultaneous incubation of different test systems with a capacity for up to

- 160 IIFT samples
- 288 dilutions
- 18 slides



4 Washing

Efficient and **carryover-free washing** using three washable stainless-steel needles



5 Mounting

Fully automated slide mounting prevents sample material drying, creating the ideal conditions for the acquisition of excellent fluorescence images – even with long worklists.



6 Microscopy

Fast image acquisition with the **high-quality microscope unit with three automatically changing objectives** (4x, 10x, 20x)

7 Image acquisition

Brilliant fluorescence images due to the **high-resolution camera with autofocus**

Automatic data transmission to EUROLabOffice 4.0 for final evaluation



Computer-assisted IIFT evaluation with deep learning technology

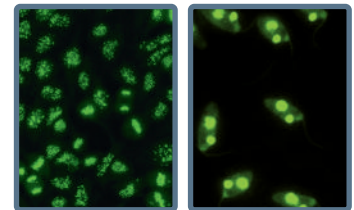
The **EUROPattern Classifier**^{*}, which can be integrated into EUROLabOffice 4.0, automatically generates a result proposal (including titer calculation) for a constantly growing number of substrates. This involves classification of the detected fluorescence patterns by means of deep convolutional neural networks, a deep-learning method. All the individual findings obtained with the substrates and dilutions are then consolidated into one final result for each patient.

ANA diagnostics

- **HEp-2/HEp-20-10 cells:** Automatically generated pattern and titer proposals with confidence values for nine fluorescence patterns according to the ICAP^{*} (homogeneous, speckled, dense fine-speckled, nucleolar, nuclear dots, centromeres, nuclear membrane, AMA and cytoplasmic) and any combinations thereof

^{*}ICAP: International Consensus on Antinuclear Antibody (ANA) Patterns

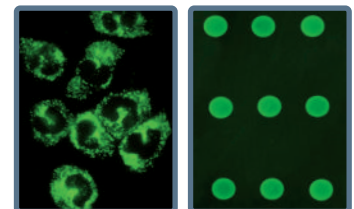
- **Crithidia luciliae:** Automated positive/negative classification and titer proposals based on the specific kinetoplast fluorescence for the detection of anti-dsDNA antibodies



ANCA diagnostics

- **Granulocytes:** Automatically generated pattern and titer proposals with confidence values for the fluorescence patterns pANCA, cANCA and atypical ANCA

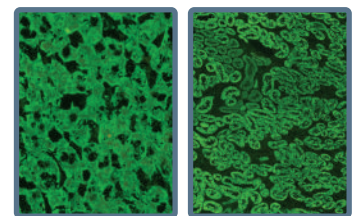
- **EUROPLUS antigen dots:** Automated positive/negative classification of the mono-specific antigen fluorescence for confirmation and for differentiation from other diseases



Diagnostics of autoimmune liver diseases

- **Liver (rat):** Automated positive/negative classification for relevant ANA and identification of anti-LKM-like patterns ("LKM-like", is given as "anti-LKM" pattern after a confirmatory result on kidney tissue) to support the diagnosis of autoimmune hepatitis types 1 and 2

- **Kidney (rat):** Automated positive/negative classification for AMA, specific for primary biliary cholangitis, and identification of anti-LKM-like patterns ("LKM-like", is given as "anti-LKM" pattern after a confirmatory result on liver tissue; suspected autoimmune hepatitis type 2)



^{*}soon available for the UNIQQ 160

Test systems

Product	Order no.
IIFT: Granulocyte Mosaic 13	FA 1201-13
IIFT: Membranous Nephropathy Mosaic 1	FA 1254-1
Anti-Phospholipase A2 receptor (PLA2R) IIFT	FA 1254-50
Anti-THSD7A IIFT	FA 1254-51
IIFT Mosaic: HEp-2 / Liver (Monkey)	FA 1510-1
IIFT Mosaic: HEp-20-10 / Liver (Monkey)	FA 1512-1
IIFT: HEp-2	FA 1520
IIFT: HEp-20-10	FA 1522
IIFT: Crithidia luciliae sensitive (Anti-dsDNA)	FA 1572-1
Mosaic: Basic Profile 2	FA 1800-2
IIFT: Liver (Monkey) IgA	FA 1914 A

The availability of the listed test systems and their compatibility with the UNIQQ 160 may vary in regions outside the EU due to approval. For further information please contact your local EUROIMMUN subsidiary or distributor.