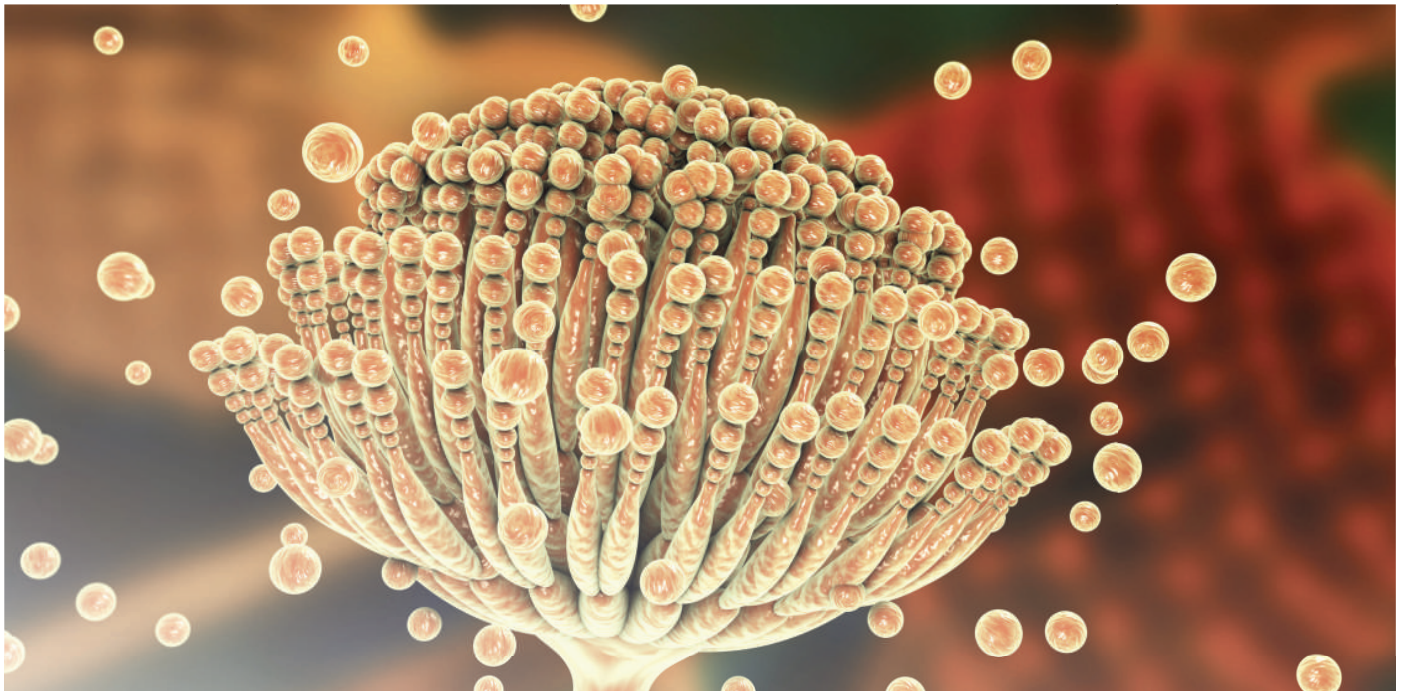




Reliable detection of Aspergillus antigen



Aspergillus Antigen ELISA

Now
available!

Quantitative test for diagnosis of invasive aspergillosis (IA)

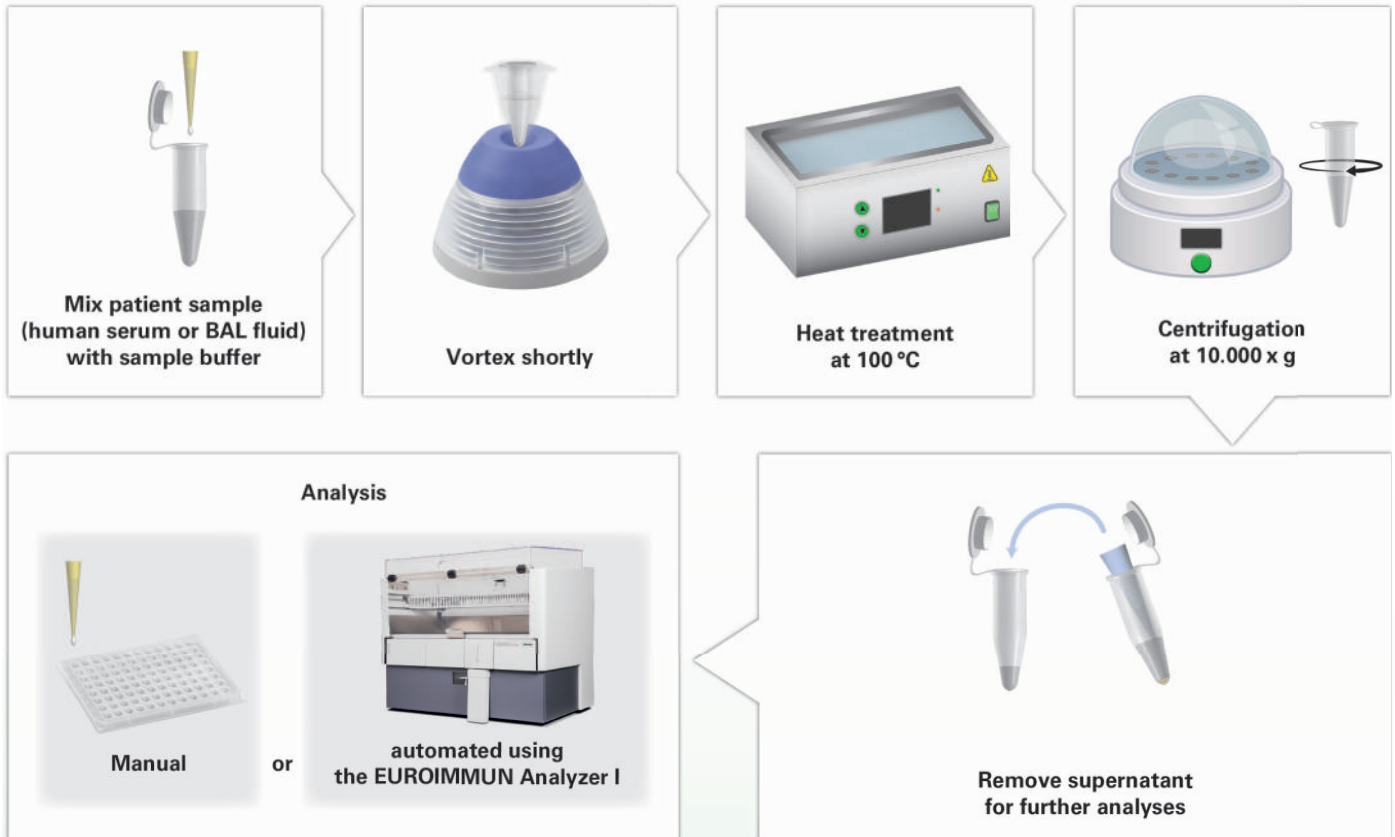
- ▶ **Monoclonal antibody for the detection of galactomannoproteins which are secreted during active fungal growth**
- ▶ **Antigen detection in serum and bronchoalveolar lavage (BAL) fluid**
- ▶ **Semi-automated processing using the EUROIMMUN Analyzer I**
- ▶ **Optionally quantitative or semi-quantitative evaluation**
- ▶ **Sensitivity and specificity comparable with the Platelia Aspergillus Ag (Bio-Rad)***

** J Clin Microbiol, Apr 2019*



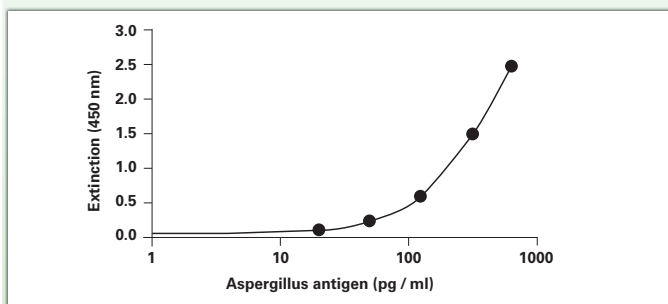
Test characteristics of the Aspergillus Antigen ELISA (Order no. EQ 6911-9601)

Sample preparation and analysis



Only for information purposes. Only the test instruction is relevant for test processing!

Evaluation



- ▶ **Semi-quantitative evaluation (cut-off: ratio 0.50)**
- ▶ **Quantitative evaluation in pg/ml**
- ▶ **Automated evaluation possible using the EUROIMMUN Analyzer I**

Benchmarking¹

	EUROIMMUN ELISA (Cut-off: ratio 0.40[*])	Bio-Rad Platelia Aspergillus-Ag-ELISA (Cut-off: ratio 0.50)
Sensitivity	56%	47%
Specificity	97%	99%

^{*} Deviating from the cut-off recommended by the manufacturer

- ▶ **Retrospective study with 43 IA patients (according to EORTC/MSG guideline)² and 77 persons without IA**
- ▶ **Positive predictive value: 90 %
Negative predictive value: 88 %**
- ▶ **Higher sensitivity with comparable specificity**

¹ J Clin Microbiol, Apr 2019 ² IA confirmed in 39 patients, likely in 4 patients