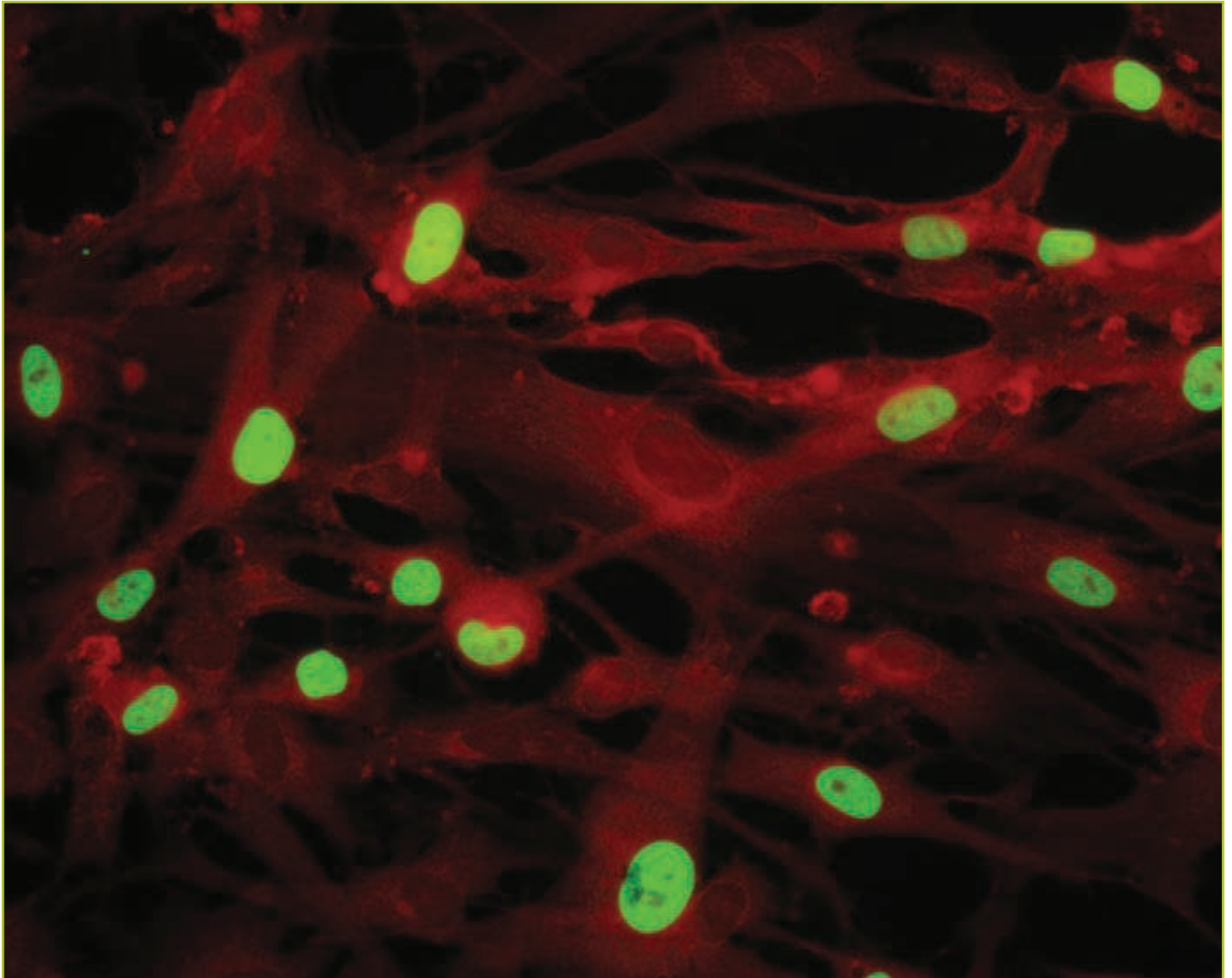




Product Selection Guide

Clinical Diagnostic Products for Infectious Disease

Light Diagnostics™ Brand Kits & Reagents



CHEMICON

THE EXPERTISE OF CHEMICON®
IS NOW A PART OF MILLIPORE

Clinical Diagnostic Products for Infectious Disease

For nearly twenty years Light Diagnostics™ products have led the way in providing innovative, high quality tools for *in vitro* diagnostics (IVD). Our Light Diagnostics product line is recognized by clinical diagnostic and investigative labs around the world as one of the original and leading brands in immunofluorescence technology.

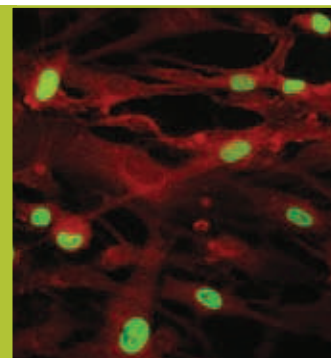


TABLE OF CONTENTS

Sample Collection - Flocked Swabs	3
Human Respiratory Virus Screening & Typing	4
SimulFluor® Kits & Reagents	5
hMPV Detection Reagents	5
Direct & Indirect Immunofluorescence	7
Human Herpesviruses	10
CMV, HSV, & VZV Kits and Reagents	10
Human Enterovirus	13
Panning Reagent	14
Antibody Sets	14
Typing Reagents	15
Molecular Biology Products	16
Amplifluor® Kits	16
NucleoClean Decontamination	17
Additional Assays/Reagents	18
Measles, Mumps, <i>P. Carinii</i> , Dengue & MonoHaem® Kits	18
Rabies Reagents	20
Control Slides/Lab Use Reagents	21

Condition of Sales

As defined by US Food and Drug Administration (FDA) regulation, the products listed in this catalog are available as In Vitro Diagnostic (IVD) unless otherwise noted. Products labeled for IVD use are approved for diagnostic procedures when used in accordance with the accompanying product insert instructions by appropriately trained personnel. Products labeled as an Analyte Specific Reagent (ASR) are products for which the analytical and performance characteristics have not been established. According to current FDA regulations, those products labeled ASR can only be used by high-complexity labs, including those regulated by CLIA, public health labs, VA hospitals and other diagnostic manufacturers. RUO products are for research use only.

Cover Photo: CMV-infected cells stained with CMV DFA (Catalogue No. 3245).

Specifically designed to be easy to use, reliable, and accurate, Light Diagnostics products are sold as both complete, ready-to-use immunofluorescence kits as well as individual component reagents. All Light Diagnostics products are produced to the highest standard to ensure reproducibility and are approved for IVD or ASR use with only limited exceptions.

Millipore's Light Diagnostics tools cover three vitally important areas of human disease: Human Respiratory Viruses, including novel Human Metapneumovirus (hMPV) detection reagents, Human Herpesviruses, and Human Enteroviruses. The Light Diagnostics line also includes an extensive collection of rabies monoclonal antibodies blended in combinations that allow users to quickly and easily distinguish isolates among a broad range of rabies variants.

Light Diagnostics technology development focuses on ease of use and cost-effective sample analysis through both select antibody blends that allow multiple disease variant detection in a single reaction and the enormously popular SimulFluor® platform for multiplex fluorescence detection. SimulFluor reagents for Respiratory Viruses are the original dual fluorochrome assays and the gold standard for the detection of two or more respiratory viruses on one cell spot.

Millipore has a long history of in-depth product support capability. Our products are renowned for their high quality performance and reliability. Providing fast, high quality results to improve your lab efficiency is our goal.

State of the Art Sample Collection

FLOCKED SWABS

Efficient sample collection is a cornerstone of sensitive diagnostic testing. For years conventional woven swabs and nasopharyngeal aspiration (NPA) have been the predominate methods of choice for common upper respiratory sample collection, each method having its unique benefits.

By comparison NPA tends to be the more efficient method of the two but is hampered by the need for specialized collection equipment and patient resistance to accepting collection buffer in the nasal cavity. Woven swabs are comparatively easily used and accepted by physician and patient, respectively, but they exhibit limited consistency in both sample capture and release.

Flocked swabs combine the best of both methods—offering sample collection efficiency comparable to NPA and the ease-of-use of swabs. Designed for the human anatomy and optimized for clinical diagnostics, Millipore's Flocked Swabs offer the performance and ease of use benefits that you need.

- Exclusive spray-on nylon flocked fiber maximizes target analyte collection
- Increased sensitivity due to high sample absorption and release vs woven fiber swabs
- No sample entrapment means minimum specimen processing time during elution
- Combination packages of media and swabs offers easy sample collection and tracking

Efficient Sample Capture

Spray-on Nylon is the secret to flocked swab technology. The short, perpendicular fiber strands produced by the spray on method, creates an absorbent, open structure that enhances sample collection and release through the natural capillary movement of liquid along the fibers.



Exclusive Spray-on Nylon Flocked Swab Technology

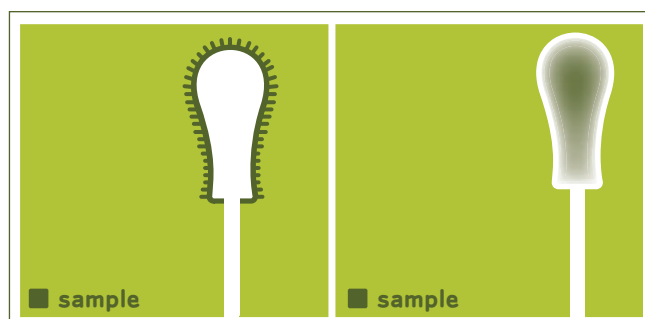
Efficient Sample Release

Elution of the liquid and solid specimen sample is rapid and automatic because they are maintained close to the surface of the swab between the nylon strands, spontaneously draining when placed in liquid or onto solid media.

In contrast, traditional fiber swabs suffer from sample entrapment due to an internal mattress-like core that is typical of the woven structure of these swabs, which disperses and ensnares the sample.



Perpendicular nylon fibers act like a soft brush, greatly enhancing sample collection efficiency. Capillary action between the nylon fiber strands facilitates strong hydraulic uptake of liquid samples. Sample stays close to the surface, allowing highly efficient elution.



Nylon Flocked Swab vs. Regular Fiber Swab

Nylon Flocked Swab (Left): Superior sample collection and release. More than 80 % of the sample analyte released.

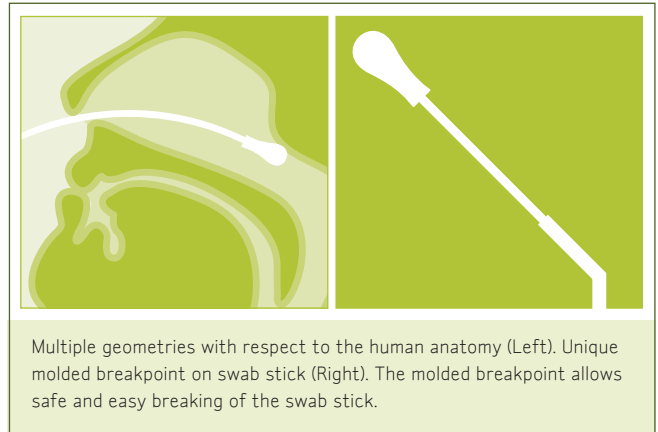
Regular Fiber Swab (Right): Sample stays trapped in fiber matrix.

Patient-Friendly Designs

Multiple engineered designs allow you to choose the sample collection solution to fit your every need. The key is in the size and shape of the tip and the specific design of the stem. Regular flocked swabs offer maximum sample collection through the large shaped tip, while the mini-tip and flexible mini-tip swabs offer a much more delicate sample collection.

Convenient Combination Packages

Match your preferred swab with the 1mL Universal Transportation Medium (UTM) and have them packaged together to eliminate mismatched quantities of swabs and media, making your ordering and work flow easy. Alternatively you can always order swabs and UTM separately for greater flexibility to create your own media and swab combination.



Multiple geometries with respect to the human anatomy (Left). Unique molded breakpoint on swab stick (Right). The molded breakpoint allows safe and easy breaking of the swab stick.

Combination Packages of Swabs & Media

Description	Qty/Pk	Catalogue No.
1 mL UTM medium*, 1 Sterile plastic nylon regular flocked swab with a molded breakpoint	50 units/box	359CM
1 mL UTM medium*, 1 Sterile plastic nylon flexible minitip flocked swab with a molded breakpoint	50 units/box	360CM
1 mL UTM medium*, 1 Sterile plastic nylon minitip flocked swab with a molded breakpoint	50 units/box	361CM

Separate Swabs

Description	Qty/Pk	Catalogue No.
Sterile plastic nylon minitip flocked swab with a molded breakpoint in a peel pouch	100 units/box	501CS01M
Sterile plastic nylon regular flocked swab with a molded breakpoint in a peel pouch	100 units/box	502CS01M
Sterile plastic nylon flexible minitip flocked swab with a molded breakpoint in a peel pouch	100 units/box	503CS01M

Media

Description	Qty/Pk	Catalogue No.
Sterile 1 mL UTM medium*	50 units/box	350CM

* UTM is not designed for bacterial or fungal transport.

Human Respiratory Virus Screening & Typing

Clinical symptoms of respiratory syncytial virus, flu virus, and other respiratory viruses are often impossible to tell apart. Seasonally, respiratory virus infection reaches peak prevalence in winter, and because the Northern and Southern Hemisphere have winter at different times of the year, there are actually two peak seasons each year. It remains unclear why outbreaks occur seasonally rather than uniformly throughout the year. Millipore offers sensitive, reliable and fast screening assays for various types of common and novel respiratory viruses.

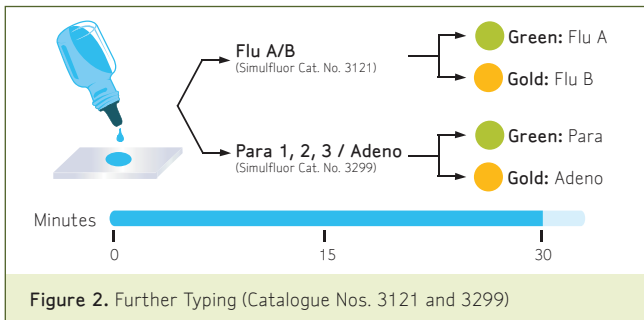
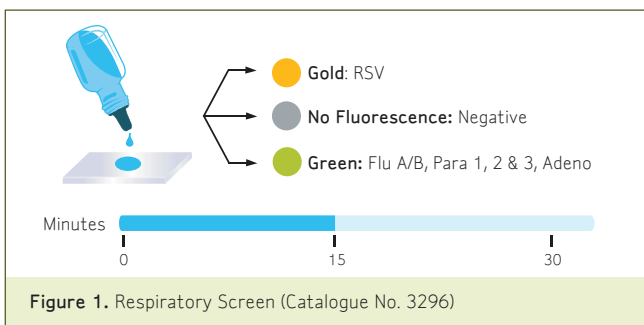
Millipore's SimulFluor® dual fluorochrome assay for rapid multiplex determination of respiratory viral

agents was the first of its kind to be widely adopted as a commercial use kit. Considered to be the gold standard of respiratory screening and typing, our SimulFluor respiratory products are rigorously tested to guarantee high quality results every time. Many of our technical experts have been with the company through several generations of product improvements. This continuity of expertise ensures reliability and in-depth understanding of your needs. Millipore's SimulFluor kits are accompanied by a simplified testing strategy to identify specific agents as fast and efficiently as possible.

SimulFluor KITS

Dual Fluorochrome Multiplex Assays

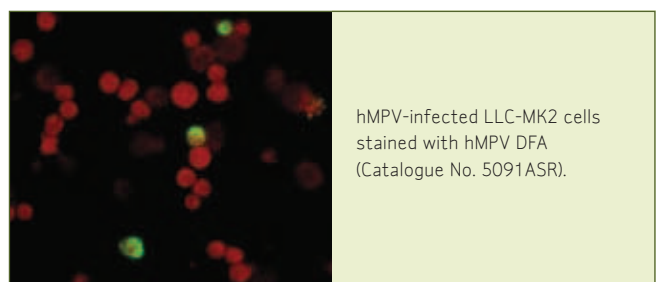
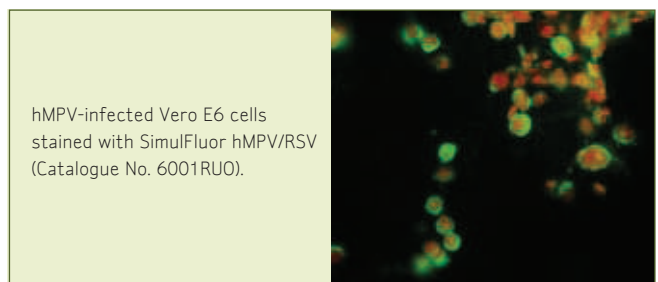
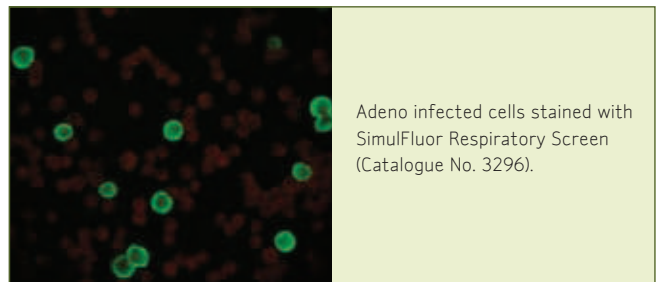
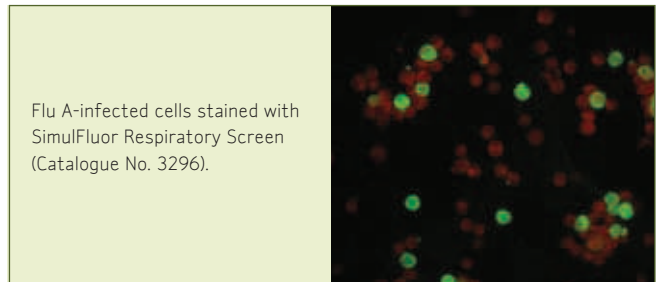
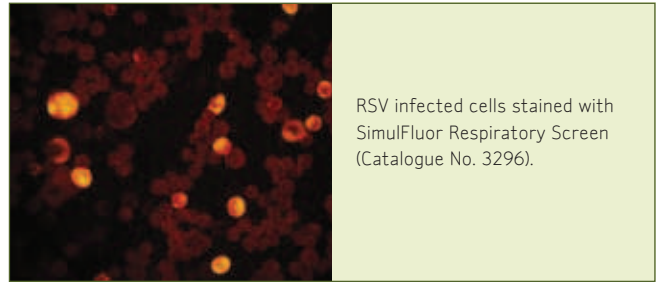
SimulFluor reagents are the next generation technology in direct immunofluorescence assays. This simple, direct fluorescence multiplex assay uses a standard FITC filter set and dual green and gold fluorochromes (Figure 1 and 2). Often referred to as the gold standard of immunofluorescence-based respiratory virus detection, the power of the multiplexed approach coupled with simple algorithm testing allows clinical laboratories to maintain or even lower costs while continuing to provide rapid and accurate testing for quality patient care.



NEW! hMPV DETECTION REAGENTS

A relatively newly identified respiratory virus, human metapneumovirus (hMPV) clinical symptoms are indistinguishable from those caused by respiratory syncytial virus (RSV), the single most likely cause of severe respiratory tract infection in children.

Now Millipore has a SimulFluor hMPV/RSV reagent (Catalogue No. 6001RU0) for research use identification of hMPV and RSV in one easy step. **See our complete listings of hMPV DFA and IFA reagents on pages 8 and 9 as well as our hMPV control slides, specifically designed to distinguish type A and type B hMPV on one slide (page 21).**



SimulFluor Kits

(All kits also include Mounting Fluid - (5013) and a complete package insert)

Description	Intended Use	Recommended Cell Lines	No. of Tests*	Qty/Pk	Catalogue No.
SimulFluor Respiratory Screen SimulFluor Respiratory Screen - (5296) Respiratory Control Slides (2) - (5071) Phosphate Buffered Saline (PBS) - (5087) Tween 20/Sodium Azide Solution (100X) - (5037)	IVD, CE	A549, HEP-2, LLC-MK2, MDCK	250	10 mL	3296
SimulFluor Respiratory Screen SimulFluor Respiratory Screen - (5296-2ML) Respiratory Control Slides (2) - (5071) Phosphate Buffered Saline (PBS) - (5087) Tween 20/Sodium Azide Solution (100X) - (5037)	IVD, CE	A549, HEP-2, LLC-MK2, MDCK	50	2 mL	3296-2ML
SimulFluor Flu A/B SimulFluor Flu A/Flu B - (5250) Influenza A/B Control Slides (2) - (5010) Phosphate Buffered Saline (PBS) - (5087) Tween 20/Sodium Azide Solution (100X) - (5037)	IVD, CE	PMK, MDCK, MRC-5, LLC-MK2	50	2 mL	3121
SimulFluor Para 1,2,3/Adeno SimulFluor Para 1, 2, 3/ Adeno Reagent - (5299) Para 1, 2, 3 Control Slide - (5011) Adeno Control Slide - (5009) Phosphate Buffered Saline (PBS) - (5087) Tween 20/Sodium Azide Solution (100X) - (5037)	IVD, CE	LLC-MK2, A549	50	2 mL	3299
SimulFluor Para 1,2/3 SimulFluor Para 1, 2/ 3 Reagent - (5297) Para 1, 2 ,3 Control Slides (2) - (5011) Phosphate Buffered Saline (PBS) - (5087) Tween 20/Sodium Azide Solution (100X) - (5037)	IVD, CE	LLC-MK2	50	2 mL	3297
SimulFluor RSV/Flu A SimulFluor RSV/Flu A Reagent - (5245) RSV Control Slides (2) - (5012) Influenza A/B Control Slides (2) - (5010) Phosphate Buffered Saline (PBS) - (5087) Tween 20/Sodium Azide Solution (100X) - (5037)	IVD, CE	HEP-2, MDCK, LLC-MK2, MRC-5, PMK	125	5 mL	3129
SimulFluor RSV/Para 3 SimulFluor RSV/Para 3 Reagent- (5240) RSV Control Slides (2) - (5012) Parainfluenza 1, 2, 3 Control Slides (2) - (5011) Phosphate Buffered Saline (PBS) - (5087) Tween 20/Sodium Azide Solution (100X) - (5037)	IVD, CE	HEP-2, LLC-MK2	50	2 mL	3127

SimulFluor Components

(All components also include a data sheet summarizing component performance)

Description	Intended Use	Recommended Cell Lines	No. of Tests*	Qty/Pk	Catalogue No.
SimulFluor Resp Screen	IVD, CE	A549, HEP-2, LLC-MK2, MDCK	250	10 mL	5296
SimulFluor Resp Screen	IVD, CE	A549, HEP-2, LLC-MK2, MDCK	50	2 mL	5296-2ML
SimulFluor FluA/FluB	IVD, CE	PMK, MDCK, MRC-5, LLC-MK2	50	2 mL	5250
SimulFluor Para 1,2,3, Adeno	IVD, CE	LLC-MK2, A549	50	2 mL	5299
SimulFluor Para 1,2/3	IVD, CE	LLC-MK2	50	2 mL	5297
SimulFluor RSV/Flu A	IVD, CE	HEP-2, MDCK, LLC-MK2, MRC-5, PMK	125	5 mL	5245
SimulFluor RSV/Para 3	IVD, CE	HEP-2, LLC-MK2	50	2 mL	5240
SimulFluor HMPV/RSV	RUO	LLC-MK2	125	5 mL	6001RUO

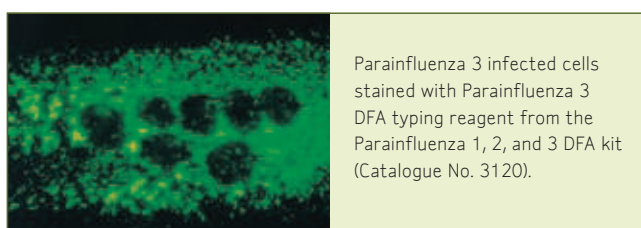
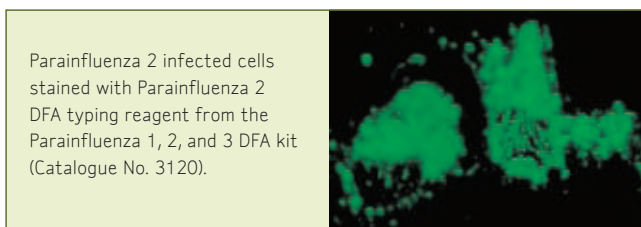
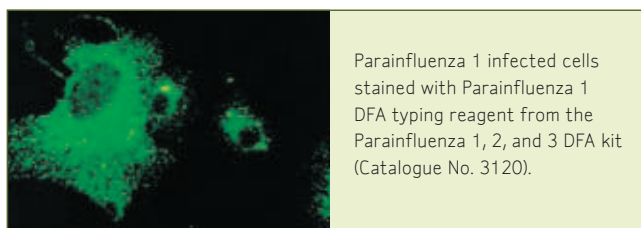
* Estimate based on 40 µL drop per test. Actual number may vary.

DIRECT (DFA) OR INDIRECT (IFA) SINGLE FLUOROCHROME FORMATS

The respiratory virus fluorescence assays are also available in a choice of single fluorochrome direct (DFA) or indirect (IFA) format. The complete DFA kits contain the applicable FITC-conjugated antibodies (with Evans Blue counterstain), appropriate control slides, PBS/Tween and mounting fluid. The IFA respiratory screening kits include a cocktail of the unconjugated respiratory viral antibodies, the FITC-conjugated secondary antibody (with Evans Blue counterstain), appropriate control slides, PBS/Tween and mounting fluid. **Additional control slides can be found separately on page 21 and 22.**

The Light Diagnostics Respiratory Direct Immunofluorescence Assay Viral Screening and Identification kit (Catalogue No. 3137) is designed for the screening and identification of influenza A, influenza B, adenovirus, respiratory syncytial virus (RSV), parainfluenza 1, parainfluenza 2, and parainfluenza 3 following amplification in cell culture. Negative results do not preclude influenza virus infection and should not be used as the sole basis for treatment or other management decisions. Performance characteristics for influenza A were established when influenza A/H3 and A/H1 were the predominant influenza A viruses in circulation.

When other influenza A viruses are emerging, performance characteristics may vary. If infection with a novel influenza A virus is suspected based on



current clinical and epidemiological screening criteria recommended by public health authorities, specimens should be collected with appropriate infection control precautions for novel virulent influenza and sent to state or local health departments for testing. Viral culture should not be attempted in these cases unless a Biosafety Level 3 (BSL 3+) facility is available to receive and culture specimens.

Direct Immunofluorescence Kits

(All kits also include a complete package insert)

Description	Intended Use	Recommended Cell Lines	No. of Tests*	Qty/Pk	Catalogue No.
Respiratory Viral Screen DFA DFA Respiratory Screen - (5307) Respiratory Control Slides (2) - (5071) Phosphate Buffered Saline (PBS) - (5087) Tween® 20/Sodium Azide Solution (100X) - (5037) Mounting Fluid - (5013)	IVD, CE	A549, HEP-2, LLC-MK2, MDCK	250	10 mL	3107
Respiratory Panel I DFA DFA Respiratory Reagents: Adeno (5016), Influenza A (5017), Influenza B (5018), Para 1 (5019), Para 2 (5020), Para 3 (5021), RSV (5022) Antigen Control Slides (4): Adeno (5009), Influenza A & B (5010), Para 1,2,3 (5011), RSV (5012) Phosphate Buffered Saline (PBS) - (5087) Tween 20/Sodium Azide Solution (100X) - (5037) Mounting Fluid - (5013)	IVD, CE	A549, HEP-2, LLC-MK2, MDCK	7 x 50	7 x 2 mL	3110

* Estimate based on 40 µL drop per test. Actual number may vary.

Direct Immunofluorescence Kits (continued)

(All kits also include a complete package insert)

Description	Intended Use	Recommended Cell Lines	No. of Tests*	Qty/Pk	Catalogue No.
Adenovirus DFA Anti-Adenovirus / FITC Conjugate - (5016) Adeno Control Slides (2) - (5009) Phosphate Buffered Saline (PBS) - (5087) Tween 20/Sodium Azide Solution (100X) - (5037) Mounting Fluid - (5013)	IVD, CE	A549, HEP-2	50	2 mL	3130
Influenza A and B DFA Influenza A Reagent - (5017) Influenza B Reagent- (5018) Influenza A/B Control Slides (2) - (5010) Phosphate Buffered Saline (PBS) - (5087) Tween 20/Sodium Azide Solution (100X) - (5037) Mounting Fluid - (5013)	IVD, CE	PMK, MDCK, MRC-5, LLC-MK2	2 x 50	2 x 2 mL	3123
Parainfluenza 1, 2, and 3 DFA Parainfluenza 1 Reagent- (5019) Parainfluenza 2 Reagent - (5020) Parainfluenza 3 Reagent - (5021) Parainfluenza Control Slides (2) - (5011) Phosphate Buffered Saline (PBS) - (5087) Tween 20/Sodium Azide Solution (100X) - (5037) Mounting Fluid - (5013)	IVD, CE	LLC-MK2	3 x 50	3 x 2 mL	3120
Respiratory Viral Screening and Identification DFA Reagents DFA Respiratory Screen - (5307) Respiratory Identification DFA Reagents (7): Adeno DFA (5016), Influenza A DFA (5017), Influenza B DFA (5018), Para 1 DFA (5019), Para 2 DFA (5020), Para 3 DFA (5021), RSV DFA (5022) Control Slides (5): Adeno (5009), Influenza A & B (5010), Para 1, 2, 3 (5011), RSV (5012), Respiratory 8-well (5071) Phosphate Buffered Saline (PBS) - (5087) Tween 20/Sodium Azide Solution (100X) - (5037) Mounting Fluid - (5013)	IVD, CE	A549, HEP-2, LLC-MK2, MDCK	250 7 x 50	10 mL 7 x 2 mL	3137
Respiratory Syncytial Virus DFA RSV DFA - (5022) RSV Control Slides (2) - (5012) Phosphate Buffered Saline (PBS) - (5087) Tween 20/Sodium Azide Solution (100X) - (5037) Mounting Fluid - (5013)	IVD, CE	HEP-2	50	2 mL	3125

Components

(All components also include a data sheet summarizing component performance)

Description	Intended Use	Recommended Cell Lines	No. of Tests*	Qty/Pk	Catalogue No.
Respiratory DFA Reagent, FITC	IVD, CE	A549, HEP-2, LLC-MK2, MDCK	250	10 mL	5307
Adenovirus DFA Antibody, FITC	IVD, CE	A549, HEP-2	50	2 mL	5016
Influenza A Antibody, clone A1, A3, FITC	IVD, CE	MDCK	50	2 mL	5017
Influenza B Antibody, clone B2, 8671, FITC	IVD, CE	MDCK	50	2 mL	5018
Parainfluenza 1 Antibody, FITC	IVD, CE	LLC-MK2	50	2 mL	5019
Parainfluenza 2 Antibody, FITC	IVD, CE	LLC-MK2	50	2 mL	5020
Parainfluenza 3 Antibody, FITC	IVD, CE	LLC-MK2	50	2 mL	5021
Parainfluenza 4 Antibody, FITC	RUO	LLC-MK2	50	2 mL	5034
Parainfluenza Panel Antibody, FITC	IVD, CE	LLC-MK2	50	2 mL	5025
Resp Syncytial Virus (RSV), FITC	IVD, CE	HEP-2	50	2 mL	5022
Human Metapneumovirus Antibody, FITC	ASR	LLC-MK2	50	2 mL	5091ASR
Human Metapneumovirus Antibody, FITC	RUO	LLC-MK2	50	2 mL	5091RUO

* Estimate based on 40 µL drop per test. Actual number may vary.

Indirect Immunofluorescence Kits

(All kits also include a complete package insert)

Description	Intended Use	Recommended Cell Lines	No. of Tests*	Qty/Pk	Catalogue No.
Respiratory Panel I Viral Screening and Identification IFA Reagents	IVD, CE	A549, HEP-2, LLC-MK2, MDCK	250 7 x 50	10 mL 7 x 2 mL	3105
Respiratory Viral Screen - (5007)					
Unlabeled Antibodies (7): Adeno (5000), Influenza A (5001), Influenza B (5002), Para 1 (5003), Para 2 (5004), Para 3 (5005), RSV (5006)					
Anti-Mouse IgG/FITC Conjugate - (5008)					
Normal Mouse Antibody - (5014)					
Control Slides (4): Adeno (5009), Influenza A & B (5010), Para 1,2,3 (5011), RSV (5012)					
Phosphate Buffered Saline (PBS) - (5087)					
Tween 20/Sodium Azide Solution (100X) - (5037)					
Mounting Fluid - (5013)					
Respiratory Viral Screen IFA	IVD, CE	A549, HEP-2, LLC-MK2, MDCK	250	10 mL	3108
Respiratory Viral Screen - (5007)					
Anti-Mouse IgG/FITC Conjugate - (5008)					
Normal Mouse Antibody - (No. 5014)					
Phosphate Buffered Saline (PBS) - (5087)					
Tween 20/Sodium Azide Solution (100X) - (5037)					
Mounting Fluid - (5013)					

Components

(All components also include a data sheet summarizing component performance)

Description	Intended Use	Recommended Cell Lines	No. of Tests*	Qty/Pk	Catalogue No.
Respiratory Virus Screen Antibody	IVD, CE	A549, HEP-2, LLC-MK2, MDCK	250	10 mL	5007
Respiratory Syncytial Virus (RSV) Antibody	IVD, CE	HEP-2	50	2 mL	5006
Adenovirus Antibody	IVD, CE	A549, HEP-2	50	2 mL	5000
Influenza A Antibody	IVD, CE	PMK, MDCK, MRC-5, LLC-MK2	50	2 mL	5001
Influenza B Antibody	IVD, CE	PMK, MDCK, MRC-5, LLC-MK2	50	2 mL	5002
Parainfluenza 1 Antibody	IVD, CE	LLC-MK2	50	2 mL	5003
Parainfluenza 2 Antibody	IVD, CE	LLC-MK2	50	2 mL	5004
Parainfluenza 3 Antibody	IVD, CE	LLC-MK2	50	2 mL	5005
Parainfluenza 4 Antibody	RUO	LLC-MK2	50	2 mL	5033
Human Metapneumovirus Antibody	ASR	LLC-MK2	50	2 mL	6002ASR
Human Metapneumovirus Antibody	RUO	LLC-MK2	50	2 mL	6002RUO
Goat Anti-Mouse IgG Antibody, FITC (For Use with Enterovirus and Resp IFA Reagents)	IVD, CE	N/A	250	10 mL	5008

* Estimate based on 40 µL drop per test. Actual number may vary.

Human Herpesviruses

Kits & Reagents: CMV, HSV and VZV

The human Herpesviruses are members of the Herpesviridae (the Herpesvirus Family) – a large family of viruses that establish latent infections for the life of their host. There are hundreds of different Herpesviruses that infect a broad array of species. Members of the Herpesvirus Family are highly adapted to their natural hosts but often cause severe disease when they infect other host species.

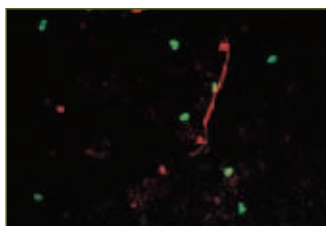
NEW CE MARKED! CMV pp65 ANTIGENEMIA IFA

Detection of CMV in blood leukocytes is closely associated with the clinical manifestations of CMV disease and is highly effective in the rapid diagnosis of CMV infection, potentially preventing delay in disease treatment using antiviral drugs such as ganciclovir and foscarnet. The Light Diagnostics™ CMV pp65 Antigenemia IFA Kit (3247) is specifically designed as a rapid, sensitive method for detection of CMV in isolated leukocytes using an indirect immunofluorescence technique on cytospin preparations of peripheral blood leukocytes.

The new 3247X version of the CMV pp65 Antigenemia Kit substitutes the original dextran method for leukocyte separation with a superior Ammonium Chloride-based method. The result is a new CMV pp65 Antigenemia IFA Kit (3247X) that eliminates time consuming sample processing steps, significantly improving turnaround time.

Recently cleared for diagnostic use in the European Union, ask your local sales representative or go to Millipore.com to find out about the availability of 3247X.

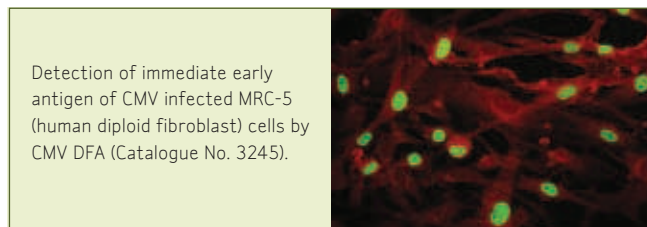
Note: Catalogue No. 3247X – Not yet available for sale in the United States or Canada.



CMV lower matrix phosphoprotein stained with CMV Antigenemia IFA Kit (Catalogue No. 3247) in isolated peripheral blood leukocytes.

CMV EARLY DETECTION

When early detection is critical, Millipore's Light Diagnostics Cytomegalovirus (CMV) Direct Immunofluorescence Assay (Catalogue No. 3245) provides pre-CPE (cytopathic effects) detection of CMV in tissue, before damaged cells can be seen microscopically with an early detection option at 24 hours after specimen inoculation. This CMV assay is also offered in an Indirect Immunofluorescence (IFA) format (Catalogue No. 3135).



Detection of immediate early antigen of CMV infected MRC-5 (human diploid fibroblast) cells by CMV DFA (Catalogue No. 3245).

SimulFluor KITS FOR HSV & VZV IDENTIFICATION

Light Diagnostics Varicella-zoster Virus (VZV) Direct Immunofluorescence Assay (Catalogue No. 3430) qualitatively detects and identifies glycoprotein I and immediate early antigens of VZV from vesicular lesions. The kit is used for culture confirmation with standard tube cultures and shell vials, and is presumptive in the detection and identification of VZV from direct specimens. Specimens found to be negative on direct specimen examination must be confirmed with culture.

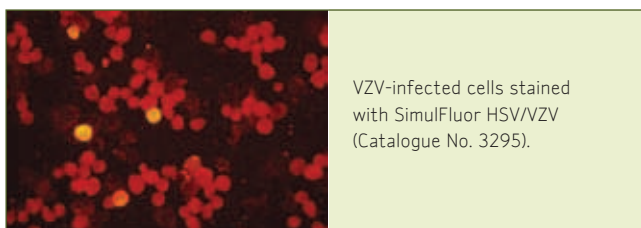
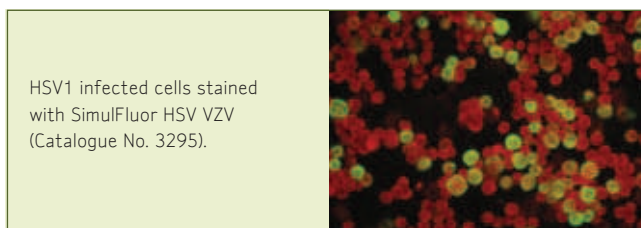
The SimulFluor HSV/VZV Immunofluorescence Kit (Catalogue No. 3295) simultaneously detects and identifies herpes simplex viruses (HSV) 1 and 2 and



Varicella-Zoster virus infected cells stained with VZV DFA Kit (Catalogue No. 3430).

varicella-zoster virus (VZV) from patients with vesicular, oral, genital, or skin lesions, using direct specimens and culture confirmation.

The SimulFluor HSV 1/2 Immunofluorescence Kit (Catalogue No. 3293) detects and identifies herpes simplex virus type 1 (HSV-1) or herpes simplex virus type 2 (HSV-2) following amplification in cell culture or by direct examination of clinical specimens prepared by cytospin. All specimens found to be negative on direct specimen examination should be tested by cell culture.



Kits

(All kits also include Mounting Fluid - (5013) and a complete package insert)

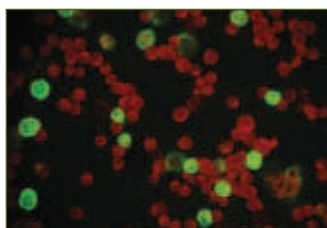
Description	Intended Use	Recommended Cell Lines	No. of Tests*	Qty/Pk	Catalogue No.
Cytomegalovirus (CMV) DFA Kit CMV FITC-Labeled Monoclonal Antibody - (5090) CMV Control Slides (2) - (5027) Phosphate Buffered Saline (PBS) - (5087) Tween 20/Sodium Azide Solution (100X) - (5037)	IVD, CE	MRC-5	250	10 mL	3245
Cytomegalovirus (CMV) IFA Kit CMV Monoclonal Antibody - (5026). Anti-Mouse IgG: FITC Conjugate - (5024) CMV Control Slides (2) - (5027) Phosphate Buffered Saline (PBS) - (5087) Tween 20/Sodium Azide Solution (100X) - (5037)	IVD, CE	MRC-5	250	10 mL	3135
Cytomegalovirus (CMV) pp65 Antigenemia IFA Kit CMV pp65 Monoclonal Antibody - (5097R) Anti-Mouse IgG: FITC Conjugate - (5024R) Separation Solution - (5111) LyseStop - (5099) Fixation Solution (5X) - (5113) Permeabilization Solution (5X) - (5115) Phosphate Buffered Saline (PBS) - (5087) Wash Supplement (100X) - (5117)	RUO		125	5 mL	3247
Cytomegalovirus (CMV) pp65 Antigenemia Antibody set CMV pp65 Monoclonal Antibody - (5097R) Anti-Mouse IgG: FITC Conjugate - (5024R)	RUO		125	5 mL	3244
Cytomegalovirus (CMV) pp65 Antigenemia IFA Kit CMV pp65 Monoclonal Antibody - (5097) Anti-Mouse IgG: FITC Conjugate - (5024) Fixation Solution (5X) - (5113) Permeabilization Solution (5X) - (5115) Leukocyte Separation Solution (5X) - (5122-5X) Phosphate Buffered Saline (PBS) - (5087) Wash Supplement (100X) - (5117)	CE, Int'l Only		125	5 mL	3247X
HSV 1 and 2 DFA Typing Kit HSV 1 Typing Reagent - (5233i) HSV 2 Typing Reagent - (5234i) HSV Control Slides (2) - (5093) Phosphate-Buffered Saline (PBS) - (5087) Tween 20/Sodium Azide Solution (100X) - (5037)	CE, Int'l Only	MRC-5	50	2 mL	3291i

* Estimate based on 40 µL drop per test. Actual number may vary.

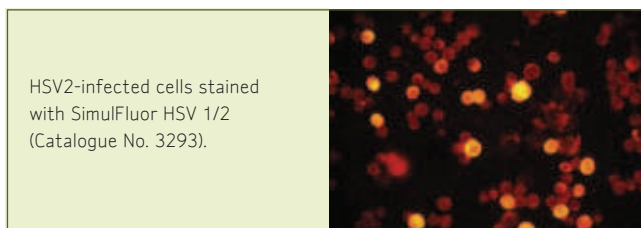
Kits (continued)

(All kits also include Mounting Fluid - (5013) and a complete package insert)

Description	Intended Use	Recommended Cell Lines	No. of Tests*	Qty/Pk	Catalogue No.
SimulFluor HSV 1/2 Kit SimulFluor HSV1/2 Reagent - (5243) HSV Control Slides (2) - (5093) Phosphate Buffered Saline (PBS) - (5087) Tween 20/Sodium Azide Solution (100X) - (5037)	IVD, CE	MRC-5	125	5 mL	3293
SimulFluor HSV/VZV Kit SimulFluor HSV/VZV Reagent - (5235) HSV Control Slides (2) - (5093) VZV Control Slides (2) - (5088) Phosphate Buffered Saline (PBS) - (5087) Tween 20/Sodium Azide Solution (100X) - (5037)	IVD, CE	MRC-5	125	5 mL	3295
Varicella-Zoster DFA Kit VZV FITC Labeled Monoclonal Antibody - (5094) VZV Control Slides (2) - (5088) Phosphate Buffered Saline (PBS) - (5087) Tween 20/Sodium Azide Solution (100X) - (5037)	IVD, CE	MRC-5	125	5 mL	3430



HSV1-infected cells stained with SimulFluor HSV 1/2 (Catalogue No. 3293).



HSV2-infected cells stained with SimulFluor HSV 1/2 (Catalogue No. 3293).

Components

(All components also include a data sheet summarizing component performance)

Description	Intended Use	Recommended Cell Lines	No. of Tests*	Qty/Pk	Catalogue No.
CMV DFA Reagent	IVD, CE	MRC-5	250	10 mL	5090
CMV IFA Reagent	IVD, CE	MRC-5	250	10 mL	5026
CMV IFA Reagent	IVD, CE	MRC-5	50	2 mL	5026-2ML
CMV pp65 Antibody	ASR		125	5 mL	5097
CMV pp65 Antibody (Component of 3247 and 3244)	RUO		125	5 mL	5097R
VZV Antibody, FITC	IVD, CE	MRC-5	125	5 mL	5094
SimulFluor HSV 1/2	IVD, CE	MRC-5	125	5 mL	5243
SimulFluor HSV/VZV	IVD, CE	MRC-5	125	5 mL	5235
Goat Anti-Mouse IgG Antibody, FITC (For Use with 5090 CMV IFA Reagent)	IVD, CE		250	10 mL	5024

* Estimate based on 40 µL drop per test. Actual number may vary.

Human Enterovirus

The Leader in Comprehensive Panning & Typing

Millipore is the leader in comprehensive breadth of target detection of human enteroviruses, including all sub-family viruses. We offer fast and simple typing in an IFA format for increased sensitivity and versatility.

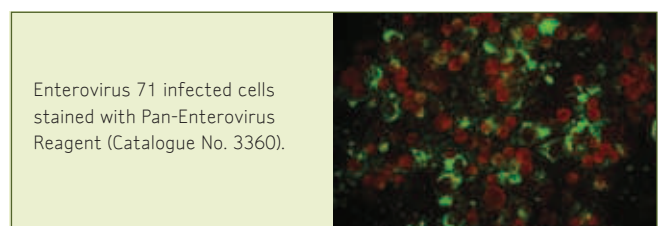
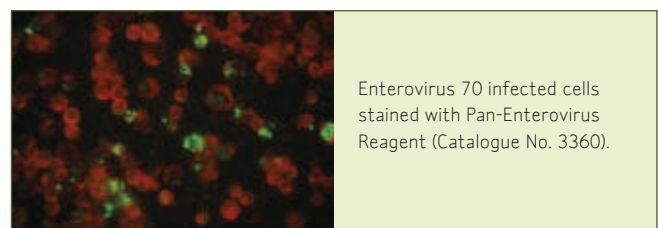
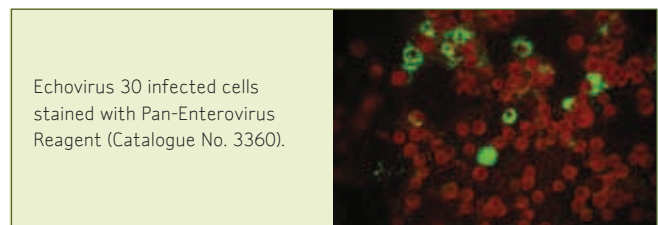
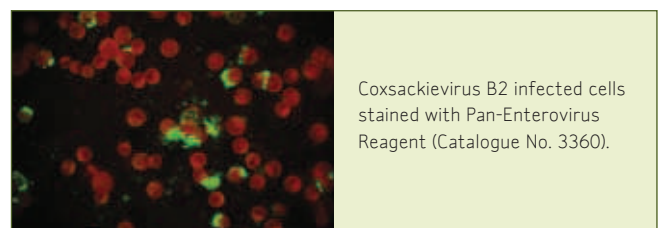
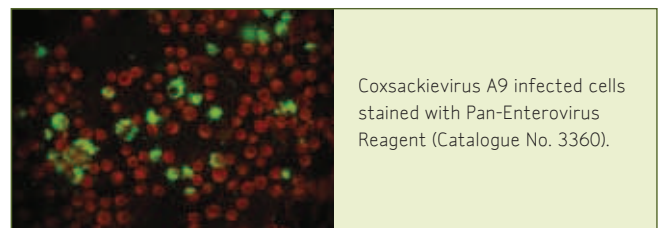
Enteroviruses are RNA viruses that include the polioviruses, coxsackieviruses and echoviruses, among others (Table 1). Second only to the common cold viruses, enteroviruses are the most common viral infectious agents in humans causing an estimated 10–15 million symptomatic infections a year in the United States.

Millipore's Pan-Enterovirus Reagent (Catalogue No. 3360) offers the most comprehensive range of enterovirus detection in a single reagent. It's unique "starry-night" staining pattern is indicative of its high performance, as seen in the six images to the right.

Note: Light Diagnostics Enterovirus reagents are ready-to-use unconjugated antibodies for use in indirect immunofluorescence assays. Secondary FITC labeled antibody (Catalogue No. 5008) is not included, but may be purchased separately (see pages 9, 14, 15, and 16). **Enterovirus control slides and Laboratory Use Reagents, such as PBS/Tween and mounting fluid, can be found on page 21.**

Table 1. Classification of Enteroviruses†

Polioviruses – PV1-3
Coxsackie A Viruses – CAV1-22,24
Coxsackie B Viruses – CBV1-6
Echoviruses – E1-7, 9, 11-21, 24-27, 29-33
Numbered Enteroviruses – EV68-71
Human Enterovirus A (HEV-A) – CAV2-8, 10, 12, 14, 16; EV71, EV76, EV89, EV90, EV91
Human Enterovirus B (HEV-B) – CAV9; CBV1-6; E1-7, 9, 11-21, 24-27, 29-33, EV69, EV73-75, EV77-8, EV79-88, EV100-101
Human Enterovirus C (HEV-C) – CAV1, 11, 13, 17, 19-22, 24, PV1-3
Human Enterovirus D (HEV-D) – EV68,70



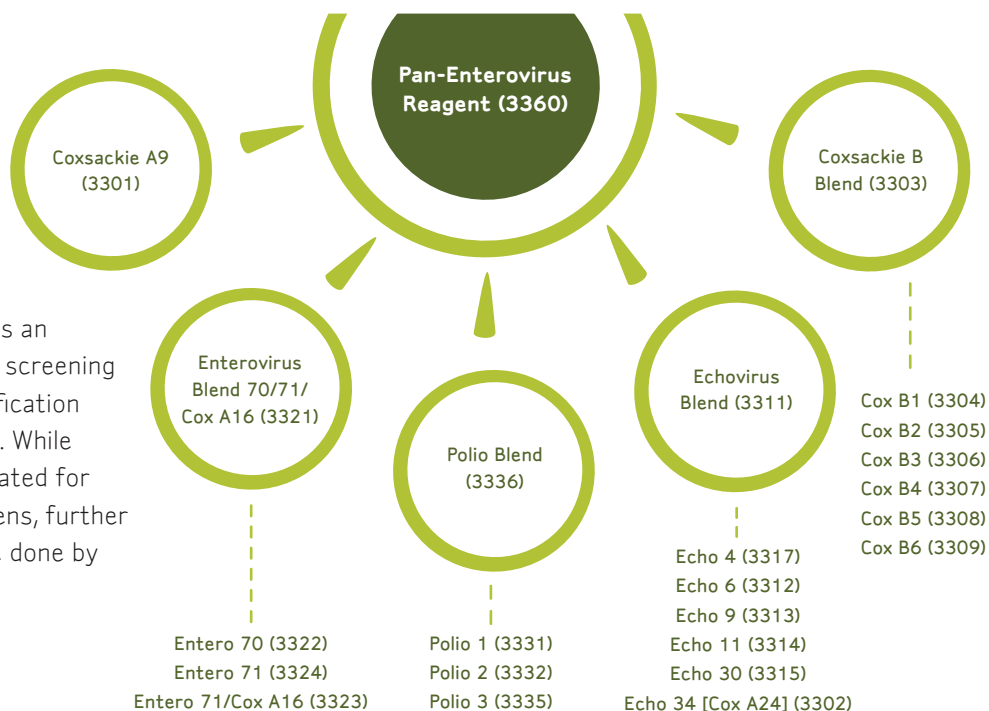
† Enteroviruses 79-101 are not yet included in the International Committee on Taxonomy of Viruses classification. The gaps in numbering result from changes in classification. Since the time of their discovery and initial classification, some serotypes have been found to be identical to another enterovirus (i.e., coxsackievirus A15 is the same as coxsackievirus A11, coxsackievirus A18 is the same as coxsackievirus A13, coxsackievirus A23 is the same as echovirus 9, echovirus 8 is a variant of echovirus 1, and echovirus 34 is the same as coxsackievirus A24 variant, echovirus 10 is reovirus 1 (genus Orthoreovirus, family Reoviridae), echovirus 28 is human rhinovirus 1A (genus Rhinovirus, family Picornaviridae), echovirus 72 is human hepatitis A virus (genus Hepatovirus, family Picornaviridae), and echoviruses 22 and 23 are now considered human parechoviruses 1 and 2, respectively (genus Parechovirus, family Picornaviridae).

PAN-ENTEROVIRUS REAGENTS & BLENDS

Light Diagnostics

Pan-Enterovirus Reagent

(Catalogue No. 3360) is available as an indirect immunofluorescence (IFA) screening reagent for the preliminary identification of enteroviruses from cell culture. While all antibody blends are not formulated for testing directly on human specimens, further post cell-culture screening can be done by using type-specific reagents.



Pan-Enterovirus Reagents & Blends

(All enterovirus products require Catalogue No. 5008 or a comparably-labeled 2° antibody)

Description	Intended Use	Recommended Cell Lines	No. of Tests*	Qty/Pk	Catalogue No.
Pan-Enterovirus Reagent	IVD, CE	RMK, MRC-5	125	5 mL	3360
Cocksackievirus B Blend, Monoclonal Antibodies	IVD, CE	RD	50	2 mL	3303
Echovirus Blend, Monoclonal Antibodies	IVD, CE	A549	50	2 mL	3311
Enterovirus 70 and 71/A16 Blend, Monoclonal Antibodies	IVD, CE	RD	50	2 mL	3321
Poliovirus Blend, Monoclonal Antibodies	IVD, CE	BGMK	50	2 mL	3336

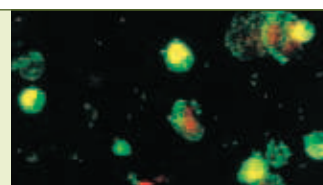
Component

Description	Intended Use	Recommended Cell Lines	No. of Tests*	Qty/Pk	Catalogue No.
Goat Anti-Mouse IgG Antibody, FITC (For Use with Enterovirus and Resp IFA Reagents)	IVD, CE	N/A	250	10 mL	5008

Enterovirus Antibody Sets

Millipore's comprehensive selection of antibody sets include 2 mL of designated blends for a specified enterovirus group, as well as 1 mL each of specific ready-to-use antibodies for a specific subgroup.

Cocksackie A9 infected rhabdomyosarcoma cells stained with Cocksackie A9 typing antibody (Catalogue No. 3301) from Cocksackievirus Antibody Set (Catalogue No. 3350).



Enterovirus Antibody Sets

(All enterovirus products require Catalogue No. 5008 or a comparably-labeled 2° antibody)

Description	Intended Use	Recommended Cell Lines	No. of Tests*	Qty/Pk	Catalogue No.
Cocksackievirus Antibody Set	IVD, CE	RD	7 x 25	1 mL each typing 50	3350 2 mL blend
Cocksackievirus Typing Reagents and Blend: Cocksackie A9 (3301), Cocksackie A24 (3302), Cocksackie B1 (3304), Cocksackie B2 (3305), Cocksackie B3 (3306), Cocksackie B4 (3307), Cocksackie B5 (3308), Cocksackie B6 (3309), and Cocksackievirus B Blend (3303)					
Echovirus Antibody Set	IVD, CE	A549	5 x 25	1 mL each typing 50	3340 2 mL blend
Echovirus Typing Reagents and Blend: Echo 4 (3317), Echo 6 (3312), Echo 9 (3313), Echo 11 (3314), Echo 30 (3315), and Echovirus Blend (3311)					

* Estimate based on 40 µL drop per test. Actual number may vary.

Enterovirus Antibody Sets (continued)

(All enterovirus products require Catalogue No. 5008 or a comparably-labeled 2° antibody)

Description	Intended Use	Recommended Cell Lines	No. of Tests*	Qty/Pk	Catalogue No.
Enterovirus Screening Set Coxsackie B Blend (3303), Echovirus Blend (3311), Enterovirus 70/71 Blend (3321), Poliovirus Blend (3336), Pan-Entero Reagent (3360)	IVD, CE	RD, A549, BGMK, RMK, MRC-5	4 x 50 125	2 mL each blend 5 mL Pan-Enterovirus	3365
Polio Antibody Set Poliovirus Typing Reagents: Polio 1 (3331), Polio 2 (3332), Polio 3 (3335), Poliovirus Blend (3336)	IVD, CE	BGMK	3 x 25 50	1 mL each typing 2 mL blend	3355
Enterovirus 70/71 Antibody Set Enterovirus Typing Reagents: Enterovirus 70 (3322), Enterovirus 71 (3323), Enterovirus 70/71 Blend (3321)	IVD, CE	RD	2 x 25 50	1 mL each typing 2 mL blend	3345

Component

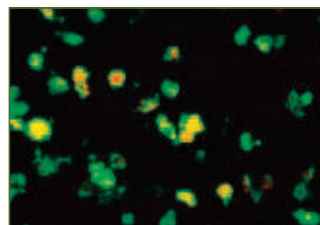
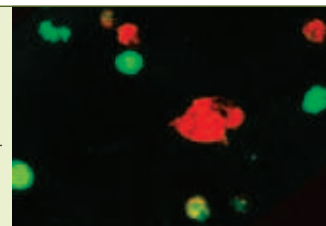
Description	Intended Use	No. of Tests*	Qty/Pk	Catalogue No.
Goat Anti-Mouse IgG Antibody, FITC (For Use with Enterovirus and Respiratory IFA Reagents)	IVD	250	10 mL	5008

Enterovirus Typing Reagents

Enterovirus typing reagents are ready-to-use unconjugated monoclonal antibodies for use in indirect immunofluorescence assays. These type-specific monoclonal antibodies are intended for the presumptive identification of virus obtained in cell culture and are not intended for testing directly on human specimens.

Enterovirus control slides and Laboratory Use Reagents such as PBS/Tween and mounting fluid, can be found on page 21.

Coxsackie A24 infected cells stained with Coxsackie A24 typing reagent (Catalogue No. 3302) from Coxsackievirus Antibody Set (Catalogue No. 3350). Coxsackie A24 is also known as Echovirus 34.



Echovirus 4 infected cells stained with Echovirus 4 individual typing reagent (Catalogue No. 3317). Echovirus 4 is one of the most common serotypes accounting for cases of viral meningitis and myelitis.

Enterovirus Typing Reagents

(All enterovirus products require Catalogue No. 5008 or a comparably-labeled 2° antibody)

Description	Intended Use	Recommended Cell Lines	No. of Tests*	Qty/Pk	Catalogue No.
Coxsackievirus A9 Monoclonal Antibody	IVD, CE	RD	25	1 mL	3301
Coxsackie A24 Virus Monoclonal Antibody (Echovirus 34)	IVD, CE	RD	25	1 mL	3302
Coxsackievirus B1 Monoclonal Antibody	IVD, CE	RD	25	1 mL	3304
Coxsackievirus B2 Monoclonal Antibody	IVD, CE	RD	25	1 mL	3305
Coxsackievirus B3 Monoclonal Antibody	IVD, CE	RD	25	1 mL	3306
Coxsackievirus B4 Monoclonal Antibody	IVD, CE	RD	25	1 mL	3307
Coxsackievirus B5 Monoclonal Antibody	IVD, CE	RD	25	1 mL	3308
Coxsackievirus B6 Monoclonal Antibody	IVD, CE	RD	25	1 mL	3309
Echovirus 4 Monoclonal Antibody	IVD, CE	A549	25	1 mL	3317
Echovirus 6 Monoclonal Antibody	IVD, CE	A549	25	1 mL	3312
Echovirus 9 Monoclonal Antibody	IVD, CE	A549	25	1 mL	3313
Echovirus 11 Monoclonal Antibody	IVD, CE	A549	25	1 mL	3314
Echovirus 30 Monoclonal Antibody	IVD, CE	A549	25	1 mL	3315
Enterovirus 70 Monoclonal Antibody	IVD, CE	A549	25	1 mL	3322
Enterovirus 71/Coxsackievirus A16 Monoclonal Antibody	IVD, CE	RD	25	1 mL	3323

* Estimate based on 40 µL drop per test. Actual number may vary.

Enterovirus Typing Reagents (continued)

(All enterovirus products require Catalogue No. 5008 or a comparably-labeled 2^o antibody)

Description	Intended Use	Recommended Cell Lines	No. of Tests*	Qty/Pk	Catalogue No.
Enterovirus 71 Monoclonal Antibody	IVD, CE	A549	25	1 mL	3324
Pan-Enterovirus Reagent, clone 9D5 Monoclonal Antibody	IVD, CE	RMK, MRC-5	125	5 mL	3361
Pan-Enterovirus Reagent, clone 2E11 Monoclonal Antibody	IVD, CE	RMK, MRC-5	125	5 mL	3362
Poliovirus 1 Monoclonal Antibody	IVD, CE	BGMK	25	1 mL	3331
Poliovirus 2 Monoclonal Antibody	IVD, CE	BGMK	25	1 mL	3332
Poliovirus 3 Monoclonal Antibody	IVD, CE	BGMK	25	1 mL	3335

*Includes complete package insert

Component

Description	Intended Use	No. of Tests*	Qty/Pk	Catalogue No.
Goat Anti-Mouse IgG Antibody, FITC (For Use with Enterovirus and Respiratory IFA Reagents)	IVD	250	10 mL	5008

* Estimate based on 40 µL drop per test. Actual number may vary.

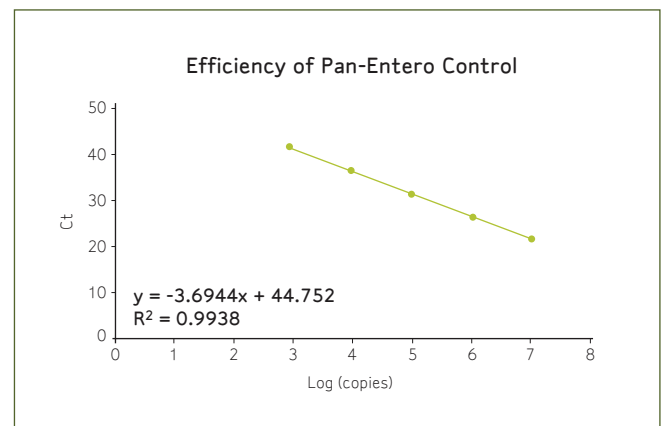
Molecular Biology Products

Amplifluor® ID KITS

Millipore's patented Amplifluor technology provides a unique, one-step, closed tube molecular detection system that simplifies high-throughput sample analysis. Amplifluor can yield either end-point analysis or real-time quantitative detection.

New Amplifluor ID Kits for molecular detection of viral targets are completely updated versions of the original Amplifluor ID Systems. Each kit now contains optimized positive control DNA for standard curve titrations and comparison with your own test sample(s). Carefully specified detection limits using the widely-adopted ABI 7500 and Roche LightCycler® 480 Real-Time PCR instruments are also included. Sample preparation and thermal-cycling reagents are not included with the kit. However, these recommended items have been clearly defined in the updated protocols to ensure

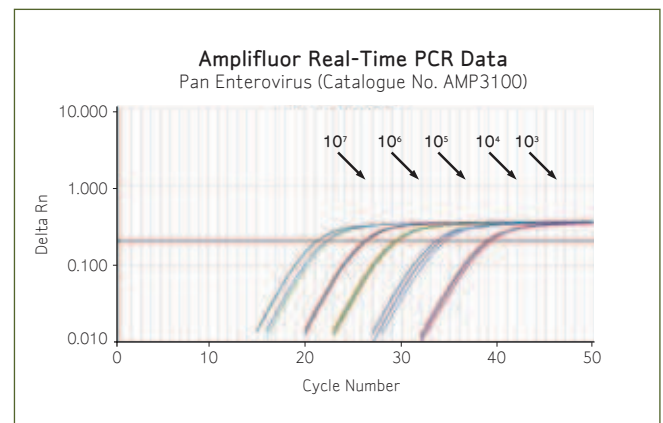
reproducible test results. Detailed performance data and user guides, also included in each kit, describe step-by-step operation and outcomes using both the ABI 7500 and Roche LightCycler 480 instrument for easy comparison with your own test results and methods.



Requires 2 PCR Cycles for Light Detection.

Elongated amplicons accumulate during successive rounds of PCR and are detected by a real-time PCR instrument.

The diagram shows a hairpin-structured amplicon. In the first cycle, the hairpin is incorporated into the PCR product. In the second cycle, the hairpin is further elongated, creating a longer amplicon that is more easily detected by the real-time PCR instrument.

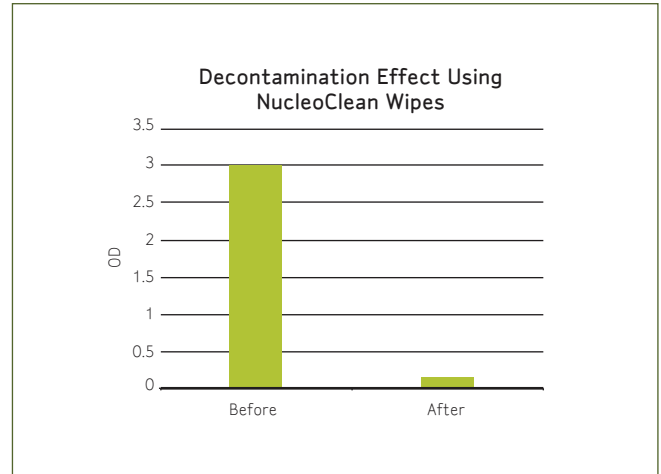


NucleoClean™ DECONTAMINATION PRODUCTS

The easiest and most reliable way to decontaminate a surface of unwanted nucleic acids!

Before: DNA target was allowed to dry on a stainless-steel surface. The test area was then swabbed with nuclease-free water and the swab was eluted in buffer. The DNA target was amplified and subsequent results revealed a highly positive signal as measured by an optical density reading.

After: As above, DNA target was allowed to dry on a stainless-steel surface. The test area was then cleaned with NucleoClean Wipes and analyzed by PCR amplification as above. The results show the effectiveness of NucleoClean products for decontamination.



Amplifluor Kits & NucleoClean Decontamination

(All kits also include a complete package insert)

Description	Intended Use	Qty/Pk	Catalogue No.
Amplifluor ID Pan-Enterovirus Reagent 25X Amplifluor ID Pan-Enterovirus Forward Primer (label) 25X Amplifluor ID Pan-Enterovirus Reverse Primer Pan-Enterovirus Positive Control	RUO	100 tests	AMP3100
Amplifluor ID West Nile Reagent 25X Amplifluor ID West Nile Forward Primer (label) 25X Amplifluor ID West Nile Reverse Primer West Nile Positive Control	RUO	100 tests	AMP3200
Amplifluor ID Avian Influenza (H5N1) Reagent 25X Amplifluor ID H5 Forward Primer (label) 25X Amplifluor ID H5 Reverse Primer 25X Amplifluor ID N1 Forward Primer (label) 25X Amplifluor ID N1 Reverse Primer H5 Positive Control N1 Positive Control	RUO	100 tests	AMP3500
Amplifluor ID HSV-1 Reagent 25X Amplifluor ID HSV-1 Forward Primer (label) 25X Amplifluor ID HSV-1 Reverse Primer 25X Amplifluor ID HSV-2 Forward Primer (label) 25X Amplifluor ID HSV-2 Reverse Primer HSV1 Positive Control HSV2 Positive Control	RUO	100 tests	AMP3800
Nucleoclean Nucleoclean Decontamination Wipes	RUO	100 wipes	3097
Nucleoclean Decontamination Spray	RUO	500 mL	3097S

Additional Assays/Reagents

Millipore also offers a selection of IFA kits and antibodies for the detection of Measles and Mumps, as well as other reagents for respiratory tract smears and fecal samples.

PNEUMOCYSTIS DFA KIT

Light Diagnostics Pneumocystis carinii DFA kit is a direct fluorescent antibody test for the detection of Pneumocystis carinii in direct smears of respiratory tract specimens including induced sputum, bronchoalveolar lavage (BAL), and lung biopsy specimens. The anti-Pneumocystis carinii monoclonal antibodies bind to both cysts and trophozoites of Pneumocystis carinii present in a respiratory tract specimen.

MEASLES IgM EIA KIT

The Light Diagnostics Measles Capture Enzyme Immunoassay utilizes a recombinant measles virus nucleoprotein antigen and corresponding monoclonal antibodies in a solid phase IgM capture assay for the detection of measles specific serum IgM. IgM from serum samples binds to the anti-human IgM antibody-coated microtiter wells.

MonoHaem® SLIDE TEST

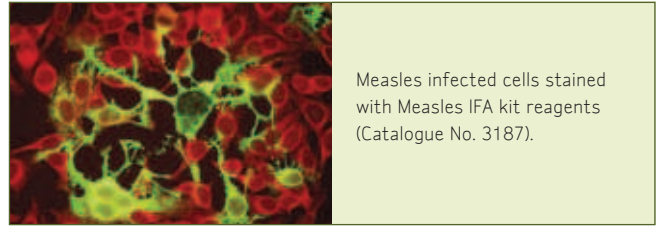
The patented MonoHaem test from industry leader Millipore is a rapid, easy to use, qualitative test employing the immunological detection of occult blood in fecal samples. The MonoHaem test specifically detects abnormal amounts of human hemoglobin present in the stool samples from excessive blood loss somewhere in the gastrointestinal system. MonoHaem is covered under patent 4,582,811 and related foreign patents.

Assays/Reagents

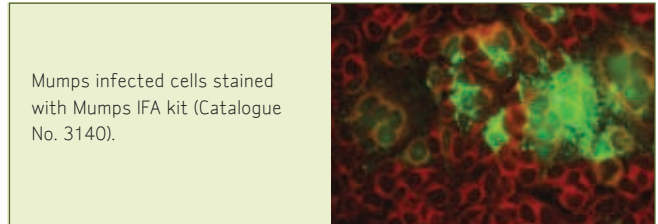
(All kits also include a complete package insert)

Description	Intended Use	No. of Tests*	Qty/Pk	Catalogue No.
Measles IgM EIA Kit	IVD, CE	48	1 plate	4050
Human IgM Capture 96-well Plate - (5080)				
Measles Positive Control - (5081), Measles Negative Control - (5082)				
Recombinant Measles Virus Nucleoprotein Antigen - (5083)				
Cell Lysate - (5084)				
Anti-NP HRP - (5120)				
Serum Diluent - (5110)				
Substrate (TMB/E) - (5114)				
Stop Solution - (5116), Wash Buffer, 10X - (5702)				

* Estimate based on 40 µL drop per test. Actual number may vary.



Measles infected cells stained with Measles IFA kit reagents (Catalogue No. 3187).



Mumps infected cells stained with Mumps IFA kit (Catalogue No. 3140).

AMEBIASIS EIA KIT

For the qualitative and/or quantitative determination of serum antibodies to Entamoeba histolytica using ELISA. Millipore tests are useful in both detecting infection by *E. histolytica* and in excluding the organism from the diagnosis of other disorders (e.g. chronic liver diseases, ulcerative colitis, etc.).

DENGUE IgM EIA KIT

Light Diagnostics Dengue IgM ELISA is intended for the detection of Dengue IgM antibodies in samples of human serum. The microwells are coated with purified dengue virus antigen from Vero cell cultured type 2 dengue. Enzyme conjugate treatment then signals Dengue-specific IgM presence through the subsequent introduction of chromagen.

Assays/Reagents (continued)

(All kits also include a complete package insert)

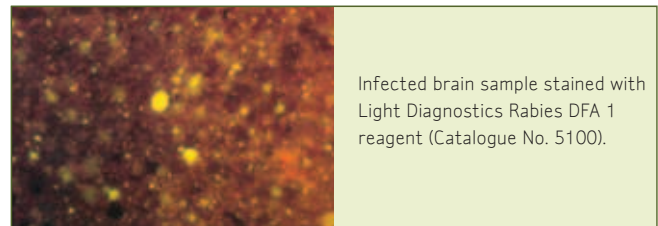
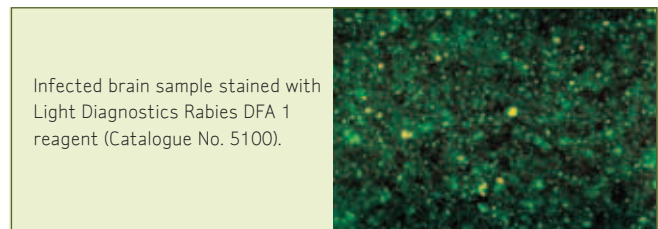
Description	Intended Use	No. of Tests*	Qty/Pk	Catalogue No.
Measles IFA Kit	IVD, CE	50	2 mL	3187
Measles Reagent - (5030)				
Measles Control Slides (2) - (5031)				
Anti-Mouse IgG / FITC Conjugate - (5008)				
Phosphate Buffered Saline (PBS) - (5087)				
Tween 20/Sodium Azide Solution (100X) - (5037)				
Mounting Fluid - (5013)				
Measles Antibody	IVD, CE	50	2 mL	5030
Measles Antibody (5030)				
Data Sheet Summarizing Product Performance				
Mumps IFA Kit	IVD, CE	50	2 mL	3140
Mumps Monoclonal Antibody - (5028)				
Mumps Control Slides (2) - (5029)				
Anti-Mouse IgG / FITC Conjugate - (5008)				
Phosphate Buffered Saline (PBS) - (5087)				
Tween 20/Sodium Azide Solution (100X) - (5037)				
Mounting Fluid - (5013)				
Mumps Antibody	IVD, CE	50	2 mL	5028
Mumps Antibody (5028)				
Data Sheet Summarizing Product Performance				
Pneumocystis carinii DFA Kit	IVD, CE	48	2 mL	3195
PCP DFA Reagent - (5195)				
Phosphate Buffered Saline (PBS) - (5087)				
Tween 20/Sodium Azide Solution (100X) - (5037)				
Mounting Fluid - (5013)				
PCP DFA Reagent	IVD, CE	48	2 mL	5195
PCP DFA Reagent - (5195)				
Data Sheet Summarizing Product Performance				
Amebiasis (Entamoeba histolytica) EIA Kit	IVD	48	1 kit	3171
12-well E. histolytica HK-98 Antigen-containing Test Strips				
Enzyme Conjugate				
Strong and Weak Positive Control Serum, Negative Control Serum				
Chromogenic Substrate				
Wash Concentrate Solution (20X), Dilution Buffer, Stop Solution				
Dengue IgM EIA Kit	IVD, International Only	96	1 plate	4090i
Dengue Antigen Coated Microwells				
IgM Positive Control Serum, IgM Negative Control Serum				
Enzyme Conjugate, Chromogenic Substrate				
RF Absorbent				
Wash Concentrate Solution (20X), Dilution Buffer, Stop Solution				
MonoHaem Fecal Occult Blood Test Kit	IVD	100	1 kit	MH100
Developer Solution, Hydrogen Peroxide Solution				
Wooden Applicator Sticks, Plastic Bags				
Sets of "Instructions for Patients", Sets of "Summary for Physicians"				
MonoHaem Slides				

* Estimate based on 40 µL drop per test. Actual number may vary.

Rabies Reagents

Millipore also offers a comprehensive and powerful selection of tools for rabies detection. Rabies DFA I is the flagship testing reagent. DFA III is an entirely different antibody reagent from DFA I. DFA III, a uniquely modified version of DFA II, offers highly specific staining.

In addition, Millipore offers a Low Glycerol Mounting Fluid that is specifically designed to enhance the persistence of fluorescent signal on specimens stained with 5100, 5500, and 5199 as well as an extensive selection of rabies typing reagents, offered as a convenient Rabies MAb Typing Set (see table below).



Rabies Variant Typing Chart using Rabies MAb Typing Set (Catalogue No. 5118)

+ Positive - Negative Varies

Cat. No.	Clone No.	Major Terrestrial Animal Reservoirs			Minor Terrestrial Animal Reservoirs			Insectivorous Bats		Other	
		Raccoon E US	Skunk NC US & CA	Skunk SC US	Dog/ Coyote Texas	Fox	Fox New England	Fox AZ	Bat I		Bat II
MAB8716	C4-62-15-2	+	+	+	+	+	+	+	+	+	-
MAB8717	CR54-62-29-54	+	-	<input checked="" type="checkbox"/>	-	-	-	-	-	-	<input checked="" type="checkbox"/>
MAB8718	C1-62-3-1	-	+	-	+	+	-	-	-	<input checked="" type="checkbox"/>	<input checked="" type="checkbox"/>
MAB8719	C2-62-8-2	+	+	-	+	+	+	+	+	<input checked="" type="checkbox"/>	<input checked="" type="checkbox"/>
MAB8722	C10-62-52-2	+	+	+	+	+	+	-	+	<input checked="" type="checkbox"/>	<input checked="" type="checkbox"/>
MAB8723	C15-62-97-3	+	+	+	+	+	-	+	-	<input checked="" type="checkbox"/>	<input checked="" type="checkbox"/>
MAB8724	C18-62-143-2	+	-	+	-	-	-	-	-	<input checked="" type="checkbox"/>	<input checked="" type="checkbox"/>

Rabies Products

(Low Glycerol Mounting Fluid recommended with Catalogue Nos. 5100, 5500, and 5199)

Description	Intended Use	Qty/Pk	Catalogue No.
Rabies DFA I Reagent	IVD, CE	5 mL	5100**
Rabies DFA II Reagent	ASR	5 mL	5500
Rabies DFA II Reagent	CE, International Only	5 mL	5500i
Rabies DFA III Reagent	ASR	5 mL	6500
Rabies Mab Typing Set MAB8716, MAB8717, MAB8718, MAB8719, MAB8722, MAB8723, MAB8724	ASR	7 x 100 µg	5118
Rabies Mab Typing Set MAB8716i, MAB8717i, MAB8718i, MAB8719i, MAB8722i, MAB8723i, MAB8724i	International Only	7 x 100 µg	5118i
Rabies Polyclonal DFA Reagent	ASR	5 mL	5199
Rabies Polyclonal DFA Reagent	International Only	5 mL	5199i
Rabies Diluent	RUO	100 mL	5070
Rabies Diluent with Evan's Blue	RUO	100 mL	RAB5061
Rabies Negative Control (for use with Rabies monoclonal reagents)	IVD, CE	0.5 mL	5102
Rabies Negative Control (for use with Rabies polyclonal reagents)	ASR	0.5 mL	5202
Rabies Negative Control (for use with Rabies polyclonal reagents)	IVD, CE, International Only		5202i
Mounting Fluid, Low Glycerol	RUO	10 mL	5096***

** NOTE: The Working Dilution must be determined by titration of the Reagent by the user.

*** Recommended for use with the following Rabies Reagents: 5100, 5500, and 5199

Control Slides/Lab Use Reagents

Control Slides

(All slides include a data sheet summarizing product specifications)

A control slide should be tested with each specimen batch to ensure proper function of the reagent and proper staining technique. Slides are provided in individually sealed foil pouches containing desiccant.

Description	Cell Line Used	Contained in...	Qty/Pk	Catalogue No.
Adenovirus Control Slides (5) Adenovirus antigen control slides containing one Adeno-virus infected (positive) well and one uninfected (negative) well	A549	3105, 3110, 3130, 3299, 3137	5 slides	5009-5
Cytomegalovirus (CMV) Control Slides (5) CMV antigen control slides containing one CMV infected (positive) and one uninfected (negative) well.	MRC-5	3135, 3245	5 slides	5027-5
Human Metapneumovirus (hMPV) Control Slides (5) hMPV antigen control slides containing one Subtype A1 (positive) and one Subtype B1 (positive) and one uninfected (negative) well	LLC-MK2		5 slides	5092R-5
HSV control Slides (5) HSV antigen control slides containing one HSV type 1 infected (positive) well, one HSV type 2 infected (positive) well and one uninfected (negative) well.	HEP-2	3291i, 3293, 3295	5 slides	5093-5
Influenza A, B Control Slides (5) Influenza A & B antigen control slides containing one well each of Influenza A & B infected cells and one uninfected (negative) well.	MDCK	3105, 3110, 3121, 3123, 3137	5 slides	5010-5
Measles Control Slides (5) Measles antigen control slides containing one Measles infected (positive) well and one uninfected (negative) well.	HEP-2	3187	5 slides	5031-5
Mumps Control Slides (5) Mumps Control slides containing one mumps infected (positive) well and one uninfected (negative) well.	HEP-2	3140	5 slides	5029-5
Parainfluenza 1, 2, 3 Control Slides (5) Parainfluenza 1, 2, 3 antigen control slides containing one well each of Parainfluenza 1, 2, 3 infected cells and one uninfected (negative) well.	LLC-MK2	3105, 3110, 3120, 3297, 3299, 3127	5 slides	5011-5
Parainfluenza 4 Control Slides (5) Parainfluenza 4 antigen control slides containing one Parainfluenza 4 infected (positive) well and one uninfected (negative) well.	LLC-MK2		5 slides	5098-5
Respiratory Syncytial Virus Control Slides (5) RSV antigen control slides containing one RSV infected (positive) well and one uninfected (negative) well.	HEP-2	3105, 3110, 3125, 3129, 3127, 3137	5 slides	5012-5

Control Slides (continued)

(All slides include a data sheet summarizing product specifications)

Description	Cell Line Used	Contained in...	Qty/Pk	Catalogue No.
Adeno Flu A, B, Para 1, 2, 3, RSV (uninfected well) (10) 8 well respiratory viral control slides containing seven positive wells, each infected with a different respiratory virus (Adenovirus, Influenza A, Influenza B, Parainfluenza 1, Parainfluenza 2, Parainfluenza 3, and Respiratory Syncytial Virus) and one uninfected well.	A549, HEP-2, MDCK, LLC-MK2	3107, 3137, 3296, 3296-2ML	10 Slides	5071-10
Varicella-Zoster Virus Control Slides (5) VZV antigen control slides containing one VZV infected (positive) well and one uninfected (negative) well.	MRC-5	3295, 3430	5 slides	5088-5

Enterovirus Slide Sets

(All slides include a data sheet summarizing product specifications)

Description	Cell Line Used	Recommended with...	Qty/Pk	Catalogue No.
Coxsackievirus A Slide Pkg. (Cox A9, A24, neg. controls) (5) 4-well Coxsackievirus A control slides. Each slide has two positive wells, each containing cells infected with a different Coxsackievirus A (coxsackievirus A9 and coxsackievirus A24) and two uninfected (negative) wells.	RD	3301, 3302, 3360, 3350	5 slides	5076
Coxsackievirus B Slide Pkg. (Cox B1-6, neg. controls) (5) 12-well coxsackievirus B control slides. Each slide has six positive wells, each containing cells infected with a different coxsackievirus B, B1, B2, B3, B4, B5, B6	BGMK	3303, 3304, 3305, 3306, 3307, 3308, 3309, 3365, 3350, 3360	5 slides	5075
Echovirus Control Slide Package (5) 10-well echovirus control slides. Each slide has five positive wells, each containing cells infected with a different echovirus, 4, 6, 9, 11, 30	A549	3311, 3312, 3313, 3314, 3315, 3317, 3340, 3360	5 slides	5074
Enterovirus Slide Pkg. (Enterovirus 70,71,neg.controls) (5) 4-well Enterovirus 70/71 control slides. Each slide has two positive wells, each containing cells infected with a different enterovirus (enterovirus 70 and enterovirus 71) and two uninfected (negative) wells.	RD	3321, 3322, 3323, 3324, 3360	5 slides	5066

Enterovirus Slide Sets

(All slides include a data sheet summarizing product specifications)

Description	Cell Line Used	Recommended with...	Qty/Pk	Catalogue No.
Poliovirus Slide Pkg. (Polio 1,2,3, neg controls) (5) 6-well poliovirus control slides. Each slide has three positive wells, each containing cells infected with a different poliovirus (poliovirus 1, poliovirus 2 and poliovirus 3) and three uninfected (negative) wells.	BGMK	3331, 3332, 3335, 3336, 3355, 3360	5 slides	5067
Enterovirus Slide Set (One of each Entero slide) Five different Enterovirus Group-Specific control slides, one slide from each group: 5066, 5067, 5074, 5075, 5076	RD, BGMK, A549		5 slides	5077

Laboratory Use Reagents

Description	Contained in...	Qty/Pk	Catalogue No.
Cytomegalovirus (CMV) pp65 Dextran Leukocyte Separation Kit Separation Solution - (5111) LyseStop - (5099) Fixation Solution (5X) - (5113) Phosphate-Buffered Saline (PBS) - (5087) Wash Supplement (100X) - (5117)	3247, 3244	125 mL/1 kit	3246
Cytomegalovirus (CMV) pp65 NH4Cl Leukocyte Separation Kit Erythrocyte Lysis Buffer - (5122) Fixation Solution (5X) - (5113) Permeabilization Solution (5X) - (5115) Phosphate-Buffered Saline (PBS) - (5087) Wash Supplement (100X) - (5117)	3247, 3244	125 mL/1 kit	3243
Mounting Fluid		10 mL	5013
Normal Mouse Antibody		10 mL	5014
PBS Packet and 100X Tween 20/azide		5 pkg	5015



www.millipore.com/offices

ADVANCING LIFE SCIENCE TOGETHER™
Research. Development. Production.

Millipore, Chemicon, MonoHaem, SimulFluor and Amplifluor are registered trademarks of Millipore Corporation.
M mark, Advancing Life Science Together, NucleoClean, and Light Diagnostics are trademarks of Millipore Corporation.
LightCycler is a registered trademark of Roche Diagnostics GMBH.
Tween is a registered trademark of ICI Americas, Inc.
Lit. No. PB1635EN00 Rev A Printed in the USA. 04/08 08-00095
©2008 Millipore Corporation, Billerica, MA 01821 U.S.A.
All rights reserved.