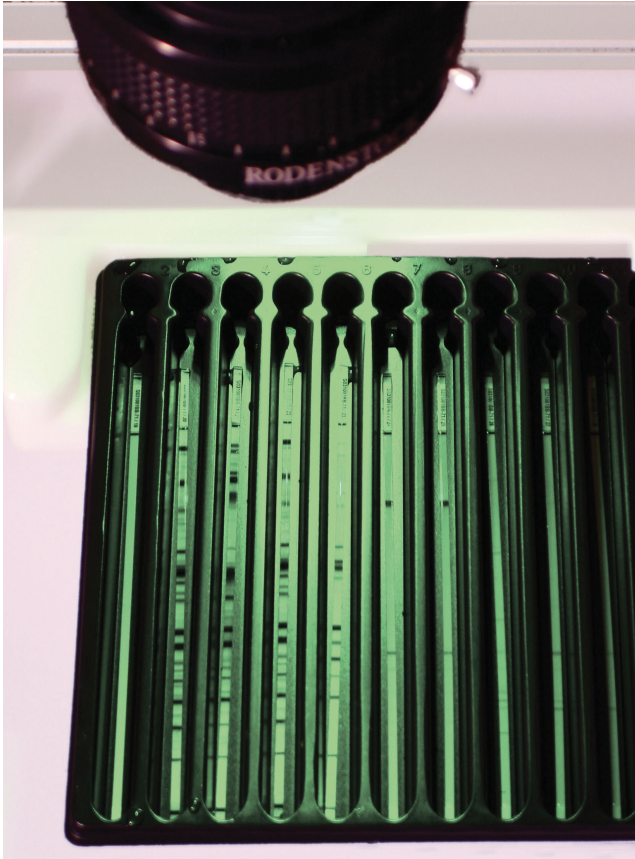
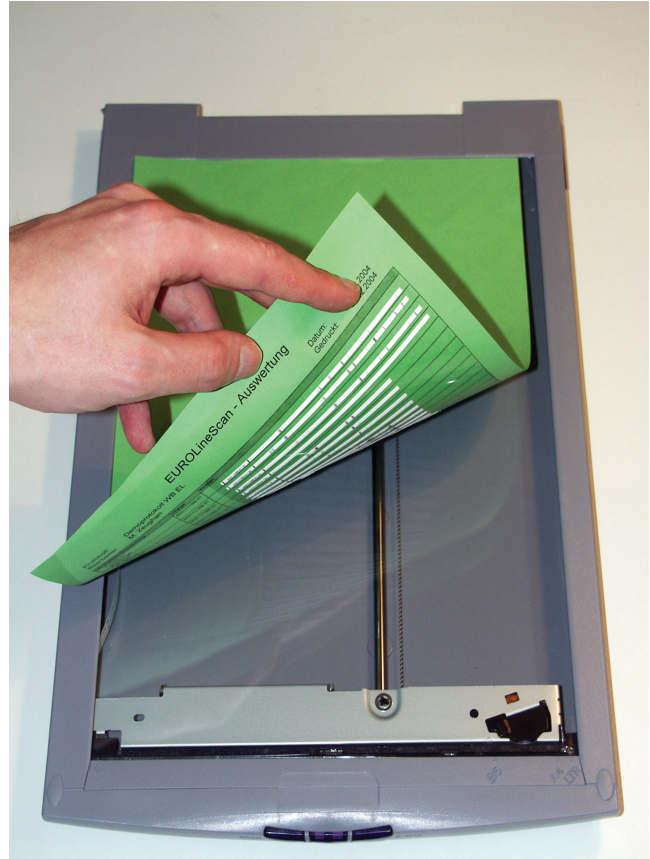




## Automated evaluation of membrane-based test systems with EUROLineScan



**EUROBlotCamera**

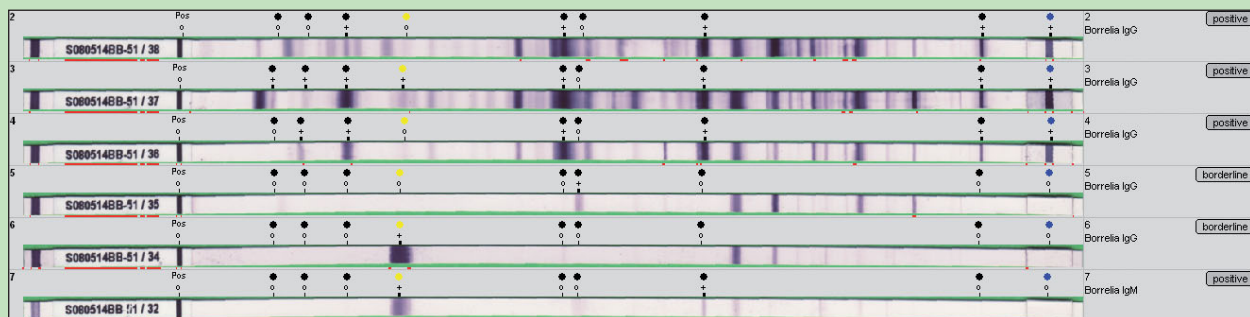
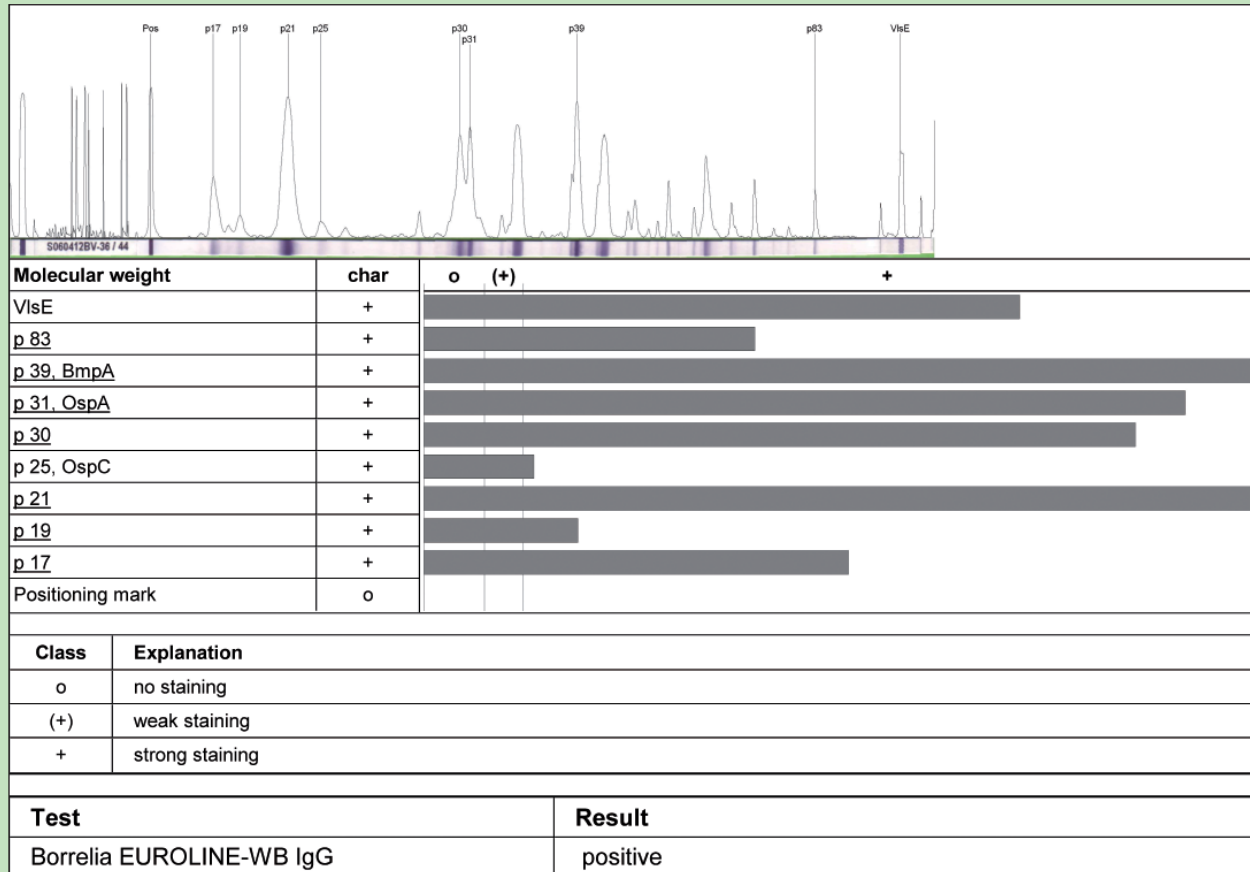


**EUROBlotScanner**

- For all EUROIMMUN blot systems: EUROLINE, EUROLINE-WB, Westernblot
- For autoimmune diagnostics, infectious serology and allergology
- EUROBlotCamera: digitalisation of strips while in the incubation tray
- EUROBlotScanner: digitalisation of strips using flatbed scanner
- Fully automated identification, quantitation and assignment of bands
- Option to modify results (changes are automatically documented)
- Complete results obtained just a few minutes after finishing the incubation
- Fully automated administration and documentation of extensive individual data
- Electronic archiving of all images and data (avoids the need to store potentially infectious blot strips)



## Evaluation of incubated blot strips with the EUROLineScan system

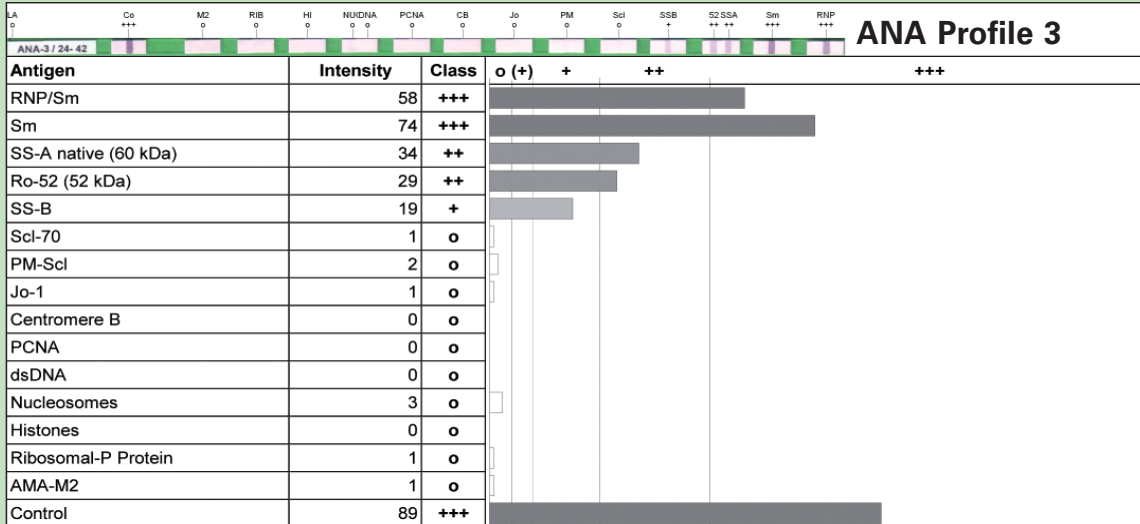


The program **EUROLineScan** has been developed by EUROIMMUN to allow fully automated, quantitative evaluation of membrane-based test systems, to facilitate administration of extensive individual data and to provide detailed documentation of results - tasks which previously took a lot of time. The incubated membrane strips are either scanned onto a protocol sheet using a **flatbed scanner (EUROBlotScanner)** or photographed directly in the incubation tray using a **camera system (EUROBlotCamera)**. EUROLineScan recognises the position of the strips, even if they have been laid inexactly. It then identifies the bands and measures their intensity. The computer-based evaluation can be monitored and the data modified manually, whereby all changes are automatically documented. The results are then saved together with the image data. It is no longer necessary to archive (potentially infectious) incubated test strips. A separate results sheet can be produced for each patient. EUROIMMUN will help integrate the EUROLineScan program into an already existing software environment.

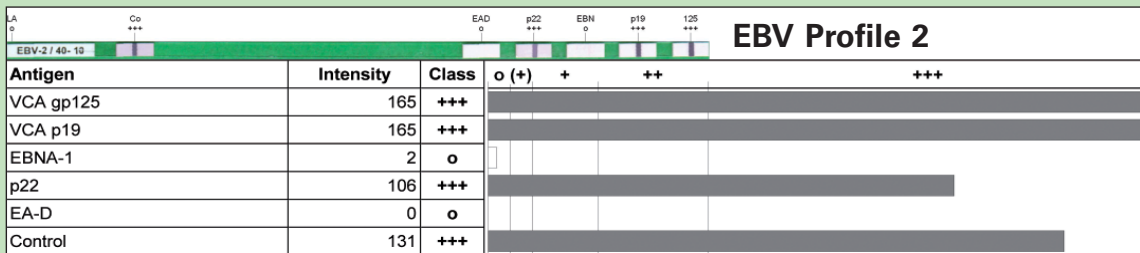
**System requirements: Computer:** Pentium of at least 350 MHz or compatible with Windows 98, NT 4.0 with SP6, 2000 or XP, Vista, 64 MB RAM, around 1 GB disc space (around 10 MB for installation, the rest for graphics and patient files), graphic resolution 1024 x 768 or higher. **Flatbed scanner:** TWAIN compatible, at least 300 dpi (recommended: 600 dpi); **Camera system:** to photograph the membrane strips directly in the incubation tray, only available from EUROIMMUN. **Printer:** a simple commercial printer is sufficient (for results and documentation).



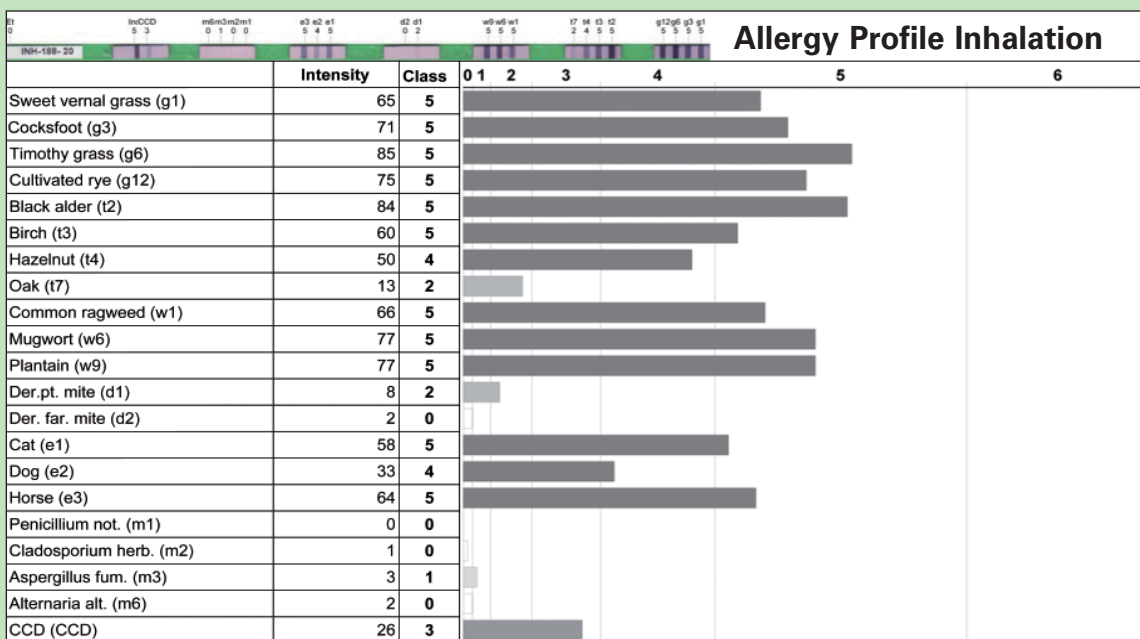
## EUROLineScan results printout (example)



Autoimmune diagnostics






Infectious serology




Allergology



## Membrane-based test systems from EUROIMMUN: EUROLINE (EL), EUROLINE-WB (EL-WB) and Westernblot (WB)

	Product	Test	Order number	Evaluation		
						
Autoantibody diagnostics	Neuronal Antigens Profile (amphiphysin, CV2, PNMA2 (Ma2/Ta), Ri, Yo, Hu	EL	DL 1111 G	X	X	X
	Gangliosides profiles (GM1, GM2, GM3, GD1a, GD1b, GT1b, GQ1b)	EL	DL 1130-X G, M	X	X	X
	Myeloperoxidase (MPO), proteinase 3 (PR3), glomerular basement membrane (GBM)	EL	DL 1200-X G	X	X	X
	Liver profiles (AMA-M2, M2-3E (BPO), Sp100, PML, gp210, LKM-1, LC-1, SLA/LP, Ro-52)	EL	DL 1300-X G	X	X	X
	Myositis profiles (Mi-2, Ku, PM-Scl-100, PM-Scl-75, SRP, Jo-1, PL-7, PL-12, OJ, EJ, Ro-52)	EL	DL 1530-X G	X	X	X
	ANA profiles (nRNP/Sm, Sm, SS-A, Ro-52, SS-B, Scl-70, PM-Scl-100, Jo-1, CENP B, PCNA, dsDNA, nucleosomes, histones, rib. P-proteins, AMA-M2)	EL	DL 1590-X G	X	X	X
	Neuronal antigens (Hu, Yo, Ri) plus recombinant Hu, Yo and Ri	EL-WB	DW 1111-2 G	X		
	HEp-2 cell antigens plus SS-A, Ro-52 and CENP B	EL-WB	DW 1520-3 G	X		
Infectious serology	Bordetella pertussis	EL	DN 2050 A, G	X	X	X
	Borrelia-RN-AT	EL	DN 2131 G, M	X	X	X
	Malaria Profile 1 (P. falciparum HRP-2 and MSP-2, P. vivax MSP and CSP)	EL	DN 2260-1 G	X	X	X
	TO.R.C.H. Profile* (T. gondii, rubella virus, CMV, HSV-1, HSV-2)	EL	DN 2410-3 G, M	X	X	X
	Hanta Profile 1	EL	DN 278h-1 G, M	X	X	X
	EBV Profile 2 (VCA gp125, VCA p19, EBNA-1, p22, EA-D)	EL	DN 2790-2 G, M	X	X	X
	Helicobacter pylori	WB	DY 2080 A, G	X	X	X
	Treponema pallidum	WB	DY 2111 G, M	X	X	X
	Treponema pallidum plus cardiolipin	EL-WB	DY 2111-1 G, M	X	X	
	Borrelia afzelii	WB	DY 2131 G, M	X	X	X
	Borrelia afzelii plus rekombinantes VlsE	EL-WB	DY 2131-1 G, M	X	X	X
	Borrelia burgdorferi	WB	DY 2132 G, M	X	X	X
	Borrelia garinii	WB	DY 2134 G, M	X	X	X
	Yersinia enterocolitica	WB	DY 2173 A, G	X	X	X
	Echinococcus granulosus	WB	DY 2320 G	X	X	X
	Herpes simplex 1 virus (HSV-1) plus HSV-2 type-specific gG2	EL-WB	DY 2531-1 G, M	X	X	X
	Cytomegalovirus* (CMV)	WB	DY 2570 G, M	X	X	X
	Rubella virus	WB	DY 2590 G	X	X	X
	Epstein-Barr virus (EBV)	WB	DY 2790 G, M	X	X	X
Allergy	Allergy profiles Inhalation (including region-specific profiles)	EL	DP 31## E	X	X	X
	Allergy profile Paediatric Inhalation	EL	DP 3111 E	X	X	X
	Allergy profiles Food (including region-specific profiles)	EL	DP 34## E	X	X	X
	Allergy profiles Atopy (including region-specific profiles)	EL	DP 37## E	X	X	X
	Allergy profile Cross Reactions	EL	DP 3711 E	X	X	X
	Allergy profile Insect Venoms	EL	DP 3720 E	X	X	X

 = visual  = using flatbed scanner (EUROBlotScanner)

 = using camera system (EUROBlotCamera)

\* currently not available as IVD in the EU