



DAS AP16/22

The Automated System for Immunofluorescence assays and ELISA



- Automation of all EUROIMMUN immunofluorescence and ELISA assays
- A high number of validated parameters
- CE conformity for system/test kit combinations
- 16 slides or 2 microtiterplates, 80 samples, 200 dilutions
- 8 parameters programmable per run
- 10 freely programmable dilution levels
- Automatic sample dilution, sample and reagent dispensation, incubation and washing of slides or microtiterplates
- Online connection to laboratory computer system
- Incubation protocol for result documentation automatically created from worklist
- Barcode reader optionally available



Hydrophobic slides

NEW

- Slide surface with hydrophobic properties specifically developed by EUROIMMUN
- Liquid droplets are prevented from spreading
- Use of a "Cytomation Pen" is unnecessary
- Price and order number are the same as for conventional EUROIMMUN slides (please add "hydrophobic" when ordering)



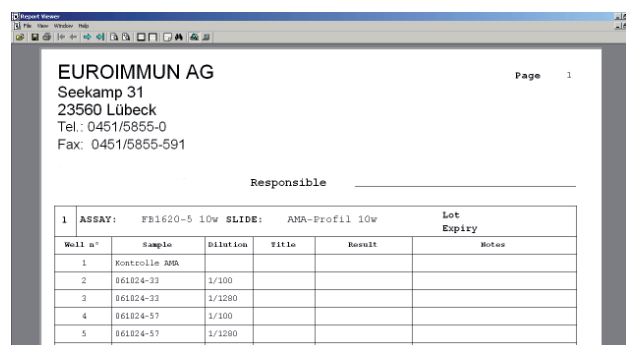
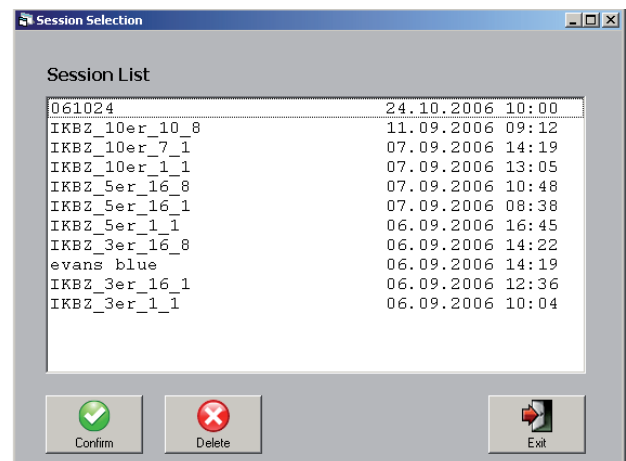
conventional EUROIMMUN slides hydrophobic

Slide definitions

- EUROIMMUN provides files containing the slide definitions and test files on CD

Work session steps

- Creating a worklist: selecting the assay and assigning the samples (optionally via barcode) or importing data from laboratory software
- Loading of samples and reagents into the system (software-based checklist)
- Fully automated serum dilution
- Sample transfer onto slides
- Automatic incubation (including washing steps)
- End of automated processing: buffer remains on the field the test fields
- Manual embedding of slides
- Evaluation at the microscope
- Automatic creation of incubation protocol based on worklist
- Printing of result protocols, if desired



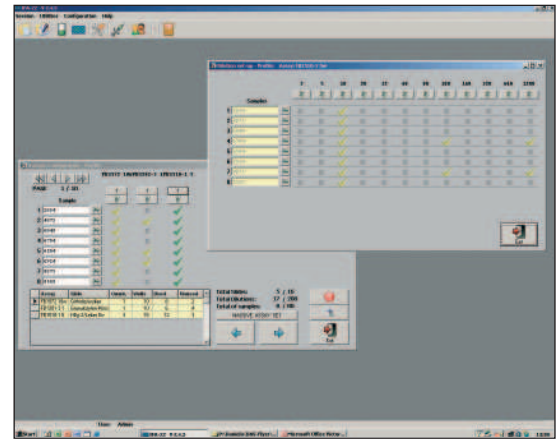
EUROIMMUN Service

- Programming and setup of automated system by qualified personnel
- Competent introduction to system with user training and comprehensive literature service
- Specialist advice and customer service onsite or via telephone
- Reliable and fast delivery of disposable materials
- Connection to in-house computer system via communication protocol ASTM
- Maintenance contract with EUROIMMUN, if desired



Software

- Standard Windows XP software: familiar user interface
- IVD conform password access in different user levels
- Automatic error detection
- Intuitive working possible
- Open system
- All relevant statistic functions included
- 10 dilutions freely programmable



Software

Barcode reader (optional)

- High convenience through barcode identification: manual patient entry unnecessary
- Reliable assignment of results and patient sera
- AP software-controlled operation
- Compatible with all AP system racks
- Barcode resolution: 0.15-0.5 mm, 6-20 mil
- Data output: RS 232 or USB
- 230/115 V, 50-60 Hz
- Dimensions: 300 x 252 x 285 mm
- Weight: 4 kg



DAS Barcode reader

Order information

- AP16 IF PLUS, with PC and monitor
EUROIMMUN order number: YG 0041-0101
- AP16 IF PLUS, with barcode reader, PC and monitor
EUROIMMUN order number: YG 0042-0101
- AP22 Speedy IF, with PC and monitor
EUROIMMUN order number: YG 0051-0101

Contact details

- Offer preparation: Anja Behrmann (Tel.: +49 451 5855525, Email: a.behrmann@euroimmun.de)
- Technical telephone support: Kristin Müller (Tel.: +49 451 5855135, Email: k.mueller@euroimmun.de)
- Technical customer service (Tel.: 0451-5855-555)



DAS AP16/22 specifications

System

Number of slides	up to 16 slides
Number of samples	80 sample tubes with \varnothing 12 mm 40 sample tubes with \varnothing 16 mm
Number of dilutions	up to 200 dilutions
Number of reagents	3x conjugate 12x controls 1x sample buffer 1x Evans Blue 5x external reservoir for wash and sample buffer and waste container
Features	Evans Blue staining can be defined

Pipetting unit

Needle system	2 stainless steel needles (1x sample dilution and dispensing, 1x aspirating off the wash liquid)
Liquid level detection	sensitivity 150 μ l
Reagen volume	10-100 μ l (in 1 μ l steps), Dispensing accuracy: CV < 2% (at 100 μ l)
Sample volume	at least 8 μ l dispensing accuracy: CV < 2% (at 100 μ l)
Features	Multi-dispensing mode

Assay options

Sample dilution	10 dilutions freely programmable serial dilution in 2 predilution tubes dilution step can be performed externally dilution time: 20 sec per sample
Incubation	8 parameters per can be combined in one run, several dispensing volumes per parameter and run sample dispensing time: 9 sec reagent dispensing time: 42 sec for one slide with 10 fields (dispensing volume 30 μ l), incl. washing with 1 ml
Washing step	2 washing cycles selectable: "Drop By Drop": 1-10 droplets selectable per cycle „Continuous flow": washing time 1-10 sec per field, dispensing volume 100-900 μ l/sec

Software

Slide definition	dimensions can be freely defined slide thickness can be defined number of fields can be freely defined up to 2 rows per slide
Documentation (printable)	assay setup slide definitions rack configuration worklists result protocols
Features	user-friendly software with online help lab software worklists can be imported low liquid levels are indicated and documented dilution step can be omitted (e.g. by using an external dilution device) search function for worklists

Online connection

Interface	ASTM interface
ASCII import	worklists and sample IDs
Export options	ASCII export and report

Barcodes

Samples/reagents	identification and allocation via barcode (optional), manual patient entry unnecessary
Barcode types	all conventional barcode types e.g. interleaved 2/5, Code 39, Code 93, Code 128, EAN 128, EAN/VPC, EAN Addendum, Codabar, Pharmacode

Other specifications

Operating system	Windows XP
Languages	English Italian
Width x depth x height	79 cm x 61 cm x 65 cm
Weight incl. table	approx. 72 kg

Electrical connection

Universal AC input	universal power supply AC 50/60 Hz, 230/115 V, 500 W
--------------------	--



DAS AP22 ELISA specifications

Sample racks

60 or 80 – 12 mm sample tubes or 40 - 16 mm sample tubes

Dilution rack

92 positions

Reagents holder

modular racks to hold calibrators, controls and reagents for 8 methods on line

Liquid reservoirs

external tanks equipped with level sensors, 2 washing buffer reservoirs

Microtiter plates

2 plates (96 wells) with incubation capability, from room temperature to 45 °C

Dispensing system

1 aspirating-dispensing probe with X-Y-Z movement, dilution system with a syringe of 1000 µl, continuous flow washing station

Washing system

two 8 nozzle on line manifolds with automatic adaptation for the different micro-plates height

Washing Residual volume

< 3µl

Washing inaccuracy

CV < 5 % with 300 µl

Reading system

8 independent photometric channels for mono and bichromatic reading, optical filters 2 filters (450 and 630 nm), 2 more on request (max 4 filters)

Reading inaccuracy

± 1% from 0.000 to 1.500 OD

± 2% from 1.500 to 3.000 OD

Dispensation

from 8 ml to 1000 ml with 1µl resolution, inaccuracy ±1% with 100 µl

Software

Windows 98 and XP operating system, to set up the work list, patient reports and results filing, calibration curves storage for each carried-out test

Power requirements

230 / 115 VAC, 50-60 Hz, 500 W

Measurements

cm 79 x 61 x 65 h

Weight

76 Kg

